



# Spare Parts Catalog

6 S 1200 BO

Material number: 1350.003.037

ZF Friedrichshafen AG

Hauptverwaltung

80038 Friedrichshafen

Deutschland

Telefon: +49 7541 77-0

Telefax: +49 7541 77-908000

[www.zf.com](http://www.zf.com)

zuständiges Werk:

Friedrichshafen



Pos.	Information	Amendment number
001	Use case -----	
002	Customer KAMAZ PUBLIC JOINT STOCK COMPANY	
003	City Naberezhnye Chelny	
004	DUNS 64-493-2113	
005	Vehicle / Apparatus -----	
006	Sales Name NEFAZ 5299	
007	Manufacturer KAMAZ PUBLIC JOINT STOCK COMPANY	
008	Engineering Name	
009	Product Use BUS	
010	Vehicle/Hardware Type CITY BUS	
011	SOP	
012	Engine	
013	Sales Designation	
014	Manufacturer KAMAZ PUBLIC JOINT STOCK COMPANY	
015	Eng.Displ.	
016	Cylinder	
017	Nom. power 206 kW	
018	RPM at nom. power 1900 1/min	
019	Nom. torque 1176 Nm	
020	RPM at nom. torque 1200 1/min	
021	Classification use case -----	
022	APPLICATION OF THE PRODUCT GUS	
024	APPROVAL NOTE 1 FIRST FITTING CHECK CARR.OUT	
028	DESIGNATION, CLUTCH MFZ430	
029	MANUFACTURER, CLUTCH ZF-SACHS	
032	TOTAL NUMBER OF WHEELS 4	
033	NUMBER OF DRIVING WHEELS 2	
034	DYNAMIC TYRE RADIUS 465 mm	
035	REAR AXLE RATIO 5.12	
036	MAXIMUM SPEED 100 km/h	
039	PERMISS.GROSS VEHICLE WEIGHT 16.5 t	
041	Use case -----	



Pos.	Information	Amendment number
042	Customer KAMAZ PUBLIC JOINT STOCK COMPANY	
043	City Naberezhnye Chelny	
044	DUNS 64-493-2113	
045	Vehicle / Apparatus -----	
046	Sales Name NEFAZ 5299	
047	Manufacturer KAMAZ PUBLIC JOINT STOCK COMPANY	
048	Engineering Name	
049	Product Use BUS	
050	Vehicle/Hardware Type CITY BUS	
051	SOP	
052	Engine	
053	Sales Designation	
054	Manufacturer Cummins Engine Co.	
055	Eng.Displ.	
056	Cylinder	
057	Nom. power 198 kW	
058	RPM at nom. power 2500 1/min	
059	Nom. torque 970 Nm	
060	RPM at nom. torque 1200 1/min	
061	Classification use case -----	
062	APPLICATION OF THE PRODUCT GUS	
064	APPROVAL NOTE 1 FIRST FITTING CHECK CARR.OUT	
068	DESIGNATION, CLUTCH MFZ430	
069	MANUFACTURER, CLUTCH ZF-SACHS	
072	TOTAL NUMBER OF WHEELS 4	
073	NUMBER OF DRIVING WHEELS 2	
074	DYNAMIC TYRE RADIUS 465 mm	
075	REAR AXLE RATIO 5.12	
076	MAXIMUM SPEED 100 km/h	
079	PERMISS.GROSS VEHICLE WEIGHT 16.5 t	
081	Product description -----	
082	INSTALLATION POS TRANSMISSION HORIZONTAL RIGHT	



Pos.	Information	Amendment number
083	TRANSMISSION ATTACHMENT FLANGE-MOUNTED	
084	INSTALLATION POSITION PRODUCT REAR	
085	RATIO, BOTTOM GEAR 6.75	
086	RATIO, TOP GEAR .83	
087	SET OF RATIOS SG	
088	RATIO, 1ST GEAR 6.75	
089	RATIO, 2ND GEAR 3.87	
090	RATIO, 3RD GEAR 2.36	
091	RATIO, 4TH GEAR 1.47	
092	RATIO, 5TH GEAR 1	
093	RATIO, 6TH GEAR .83	
094	RATIO, 1ST GEAR REVERSE 6.21	
095	DESIGN, SHIFT SYSTEM TURNING SHAFT	
096	POSITION, GEAR SHIFT SYSTEM VERTICAL	
097	DESIGN, SEPARATING CLUTCH FULL-SYNCHRONIZED	
098	REFERENCE LENGTH INPUT SHAFT 286 mm	
099	STANDARD TYPE INPUT SHAFT SAE	
100	NUMBER OF WEDGES INPUT SHAFT 10	
101	VERSION OF INPUT SHAFT FORM C	
102	NOMINAL DIAMETER INPUT SHAFT 1.75 in	
103	DIAMETER, RELEASE FLANGE 60 mm	
104	TYPE FIT RELEASE BEARING FLA. E8	
105	DESIGN BEARING OUTPUT STANDARD SUSPENSION	
106	OUTER DIA. OUTPUT FLANGE RA 180 mm	
107	NO.OF SCREWS OUTPUT FLANGE RA 4	
111	DIA. THREAD OUTPUT FL. SCR. RA M14	
113	REF. LENGTH OUTPUT FLANGE RA 88 mm	
114	THREAD PITCH OUTPUT FL SCR. RA 1.5 mm	
116	THREAD LENGTH OUTP.FL SCREW RA 50 mm	
122	DIMENSION SHIFT TURRET DIST. 184 mm	
123	MEAS. LOC. SHIFT TURRET DIST. SHIFT LEVER-LOCATION	
124	TYPE OF SHIFT CONTROL CONTROL CABLE	



Pos.	Information	Amendment number
133	SPRING ARRANGEMENT Q2	
134	TOOLING SET OF SPRINGS W044	
135	SPRING FORCE DETENT PLUNGER RG 240 N	
139	SELECTION PATTERN VARIANT GEAR SHIFT PATTERN 2	
140	SWITCH, REVERSE GEAR y	
141	DESIGN, RG (REV.GEAR) SWITCH OPENING SWITCH	
142	NOTE ON SWITCH, REVERSE GEAR GEAR SHIFT RAIL	
143	PROT. CAP SWITCH, REVERSE GEAR y	
144	DESIGN, CONNECTION, RG SWITCH DIN BAYONET	
146	SWITCH, NEUTRAL GEAR y	
147	DESIGN,NG(NEUTRAL GEAR)SWITCH OPENING SWITCH	
148	PROT.CAP SWITCH, NEUTRAL GEAR y	
149	DESIGN, CONNECTION, NG SWITCH DIN BAYONET	
152	REF.LENGTH,RELEASE BEAR.FLAN 170 mm	
155	DESIGN,CONN., CLUTCH HOUSING SAE 1	
156	LENGTH CLUTCH HOUSING 174 mm	
157	TYPE OF RELEASE MECHANISM PULLED	
158	VERSION OF CLUTCH CYLINDER SERVO	
159	DIAMETER, CLUTCH CYLINDER 100 mm	
160	ASSEMBLY POS. CLUTCH CYLINDER 6	
161	LENGTH TAPPET CLUTCH CYLINDER 127 mm	
162	DESIGN LUBRI.CONN. REL.BEARING WITHOUT GROOVE	
164	THREAD DIA. MTG BOLT SUSPENSION M16	
165	THREAD PITCH SUSPENSION 2 mm	
166	DESIGN WEAR INDICATOR CLUTCH WITH	
167	DESIGN SWITCH CLUTCH PREPARED	
173	DESIGN RELEASE BEARING WITHOUT GROOVE	
174	WRENCH SIZE, RELEASE FORK 128 mm	
176	PRESSURE ROD y	
177	RELEASE LEVER y	
190	NO PULSES PULSE SENSOR TM H70 6 IMP/U	
191	VER. PULSE SENSOR TRANSM. H70 WITH	



Pos.	Information	Amendment number
192	PROT. CAP PULSE SENSOR TM H70 y	
193	ASSEMBLY POS PULSE SENSOR H70 4	
194	NOTE ASS. POS PULSE SENSOR H70 INSTALLATION DRAWING	
195	VER. CONNECT. PULSE SENSOR H70 DIN BAYONET	
199	OIL CAPACITY, GEARBOX 11.5 dm3	
200	OIL FILL VARIANT EX WORKS	
201	OIL GRADE PERMISSIBLE ACC. TO TE-ML02	
203	COLOR JET BLACK	
204	COLOUR CLASSIFICATION ACC. TO RAL 9005	
205	PAINTING, ZF STANDARD 915 W	
206	CODING OUTER CONSERVATION KA1	
207	SCOPE OUTER CONSERVATION T	
208	CODING INNER CONSERVATION K11	
209	CONSERVATION SPECIFICATION ZFN 916	
210	Documents -----	
211	SCHALTGETRIEBE Drawing 1310.050.022	
212	SCHALTUNG Drawing 1311.107.016	
213	SET OF SPRINGS Drawing 1311.149.006	
214	DREHW.SCHALTUNG Drawing 1311.607.001	
215	6-SPEED GEARBOX Drawing 1350.603.004	
216	6-SPEED GEARBOX Assembly 1350.603.004	
217	KUPPLUNGSGLOCKE Drawing 6060.000.001	
218	CLUTCH HOUSING Drawing 6060.600.029	
219	1310.044.056 Drawing 1310.044.056	

# Assembly group overview

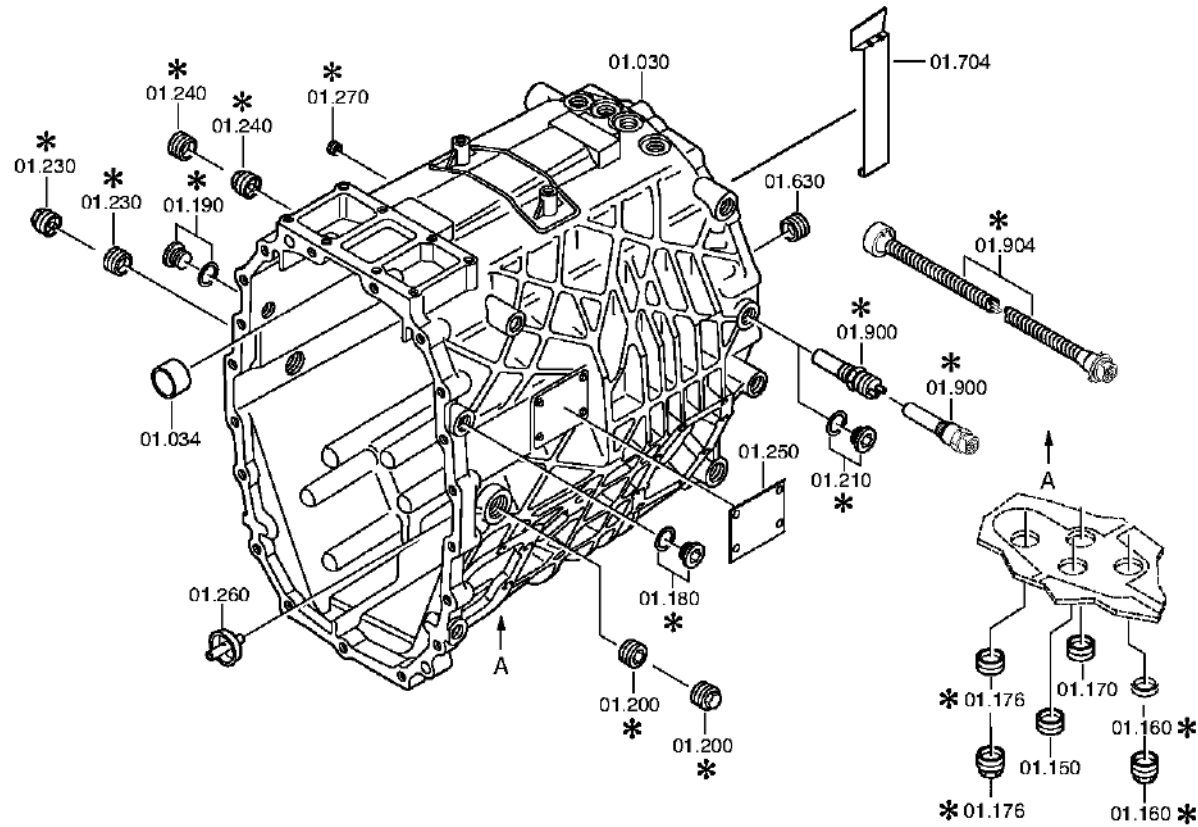
Material number: 1350.003.037

6 S 1200 BO /



Page 1 from 1

Graphics	Pos.	Material number	Name	Quantity	Amend. no.	Techn. Info.
061.01.01-1	110	1310.101.047	GEARBOX HOUSING	1		
061.01.80-1	120	1310.101.811	GEARBOX HOUSING	1		
061.01.40-1	122	1310.101.406	CLOSING COMPONENTS	1		
061.02.40-1	140	1311.102.406	CONNPLATE	1		
061.02.80-1	150	1311.102.802	INPUT SHAFT	1		
061.02.01-1	910	1310.102.017	INPUT SHAFT	1		
061.03.80-1	180	1310.103.801	LAYSHAFT	1		
061.03.02-1	920	1310.103.014	LAYSHAFT	1		
061.04.46-1	210	1311.104.453	MAIN SHAFT	1		
061.04.02-1	930	1310.104.022	MAIN SHAFT	1		
061.06.02-1	230	1310.106.026	GEAR SHIFT SYSTEM	1		
061.06.55-1	240	1311.106.414	CONNECTING PARTS	1		
061.07.80-1	282	1311.107.803	GEAR SHIFT HOUSING	1		
061.07.04-1	910	1310.107.024	GEAR SHIFT HOUSING	1		
061.07.44-1	914	1311.107.449	GEAR SHIFT SHAFT	1		
061.08.02-1	926	1311.170.004	SHIFT TURRET	1		
061.08.16-1	930	1311.170.005	COVER	1		
061.08.81-1	934	1311.170.801	COVER	1		
061.08.09-1	938	1311.170.022	CONNECTING PARTS	1		
061.12.03-1	922	1311.149.101	SET OF SPRINGS	1		
061.18.01-1	360	1311.108.013	SPEEDOMETER COVER	1		
061.18.82-1	370	1311.108.802	SPEEDOMETER COVER	1		
061.92.78-1	480	6060.101.840	ANCHORAGE	1		
061.92.59-1	900	6060.101.572	CLUTCH HOUSING	1		
061.92.87-1	920	6060.101.838	ANCHORAGE	1		
061.93.30-1	910	6060.168.001	CLUTCH RELEASE DEVICE	1		



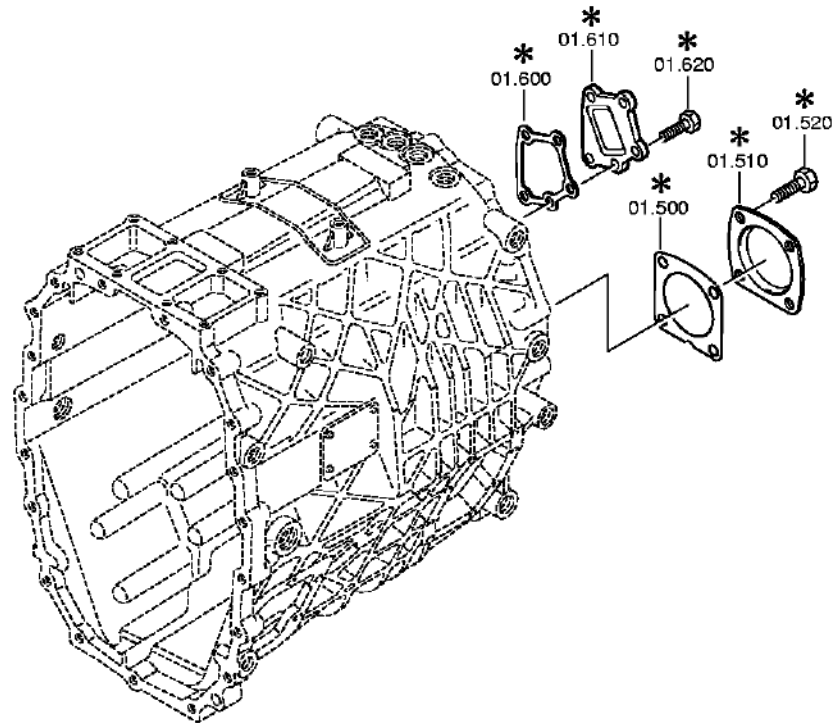


# Plant

Page 2 from 3

Material number: 1350.003.037  
Plant: 061.01.40-1  
GEARBOX HOUSING

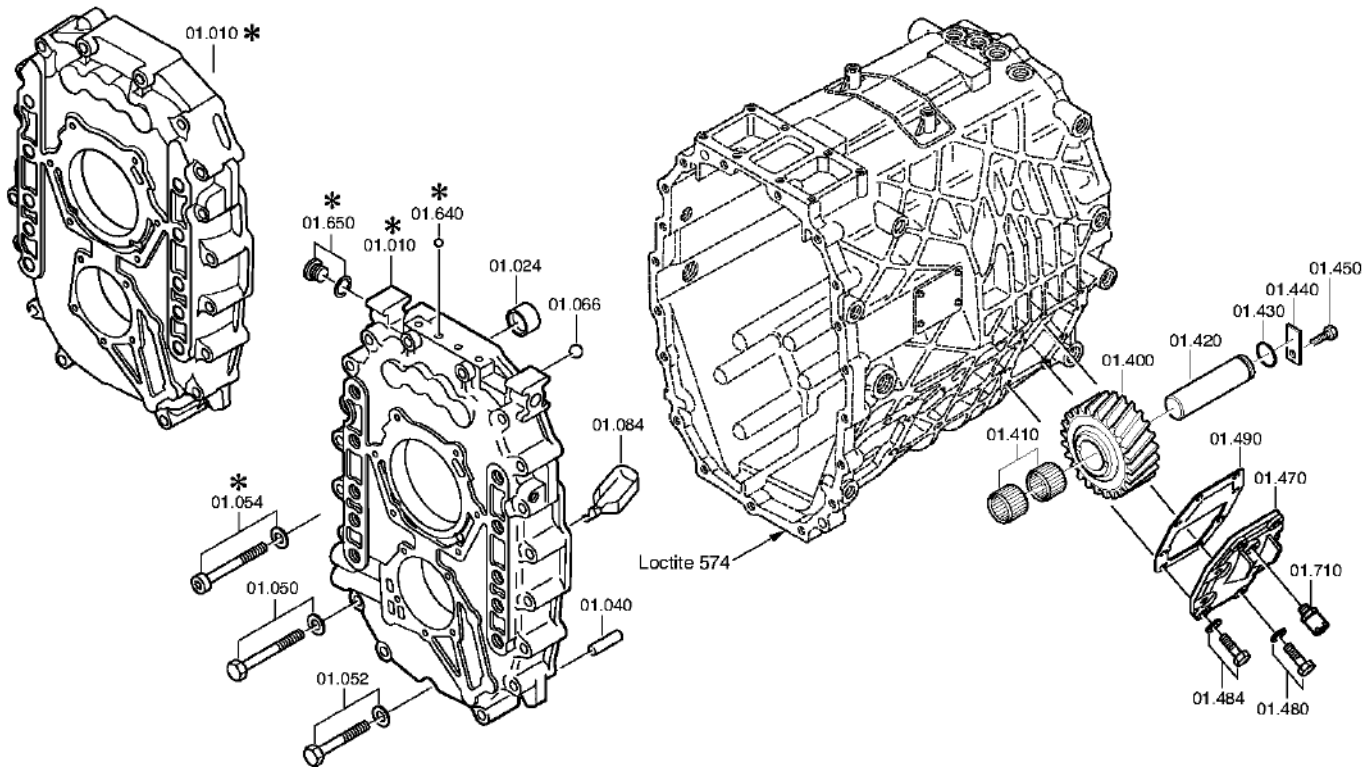
6 S 1200 BO /  
GEARBOX HOUSING





Bildtafel:  
Figure: 061.01.80  
Figure:  
Figura:

je nach Stücklistenausführung  
depending on spec. number  
\* suivant la nomenclature  
secondo la distinta base



# Parts list

Page 1 from 3

Material number: 1350.003.037

6 S 1200 BO /

Plant: 061.01.01-1

Material-assembly-group-no: 1310.101.047



Pos.	Material number	Customer material	Name	Quantity	ME	Amend. no.	Techn. Info.	Weight	Rep kit	Alternative material
10	1310.301.106		HOUSING	1		C01003986F10		0,000		
24	0501.311.613		JOINT BEARING	2			22,0X28,0X16,0*INA	0,000		
30	1310.301.023		HOUSING	1			II	0,000		
34	0501.311.613		JOINT BEARING	2			22,0X28,0X16,0*INA	0,000		
40	0631.306.231		CYLINDRICAL PIN	2			12X28	0,000		
50	---		HEXAGON BOLT	17		Z00007070911	M10X80	0,000		
---	0630.100.294		WASHER	17		Z00007158111		0,000		
---	0636.100.348		HEXAGON BOLT	17		Z00007070910	M10X80	0,000		
52	---		HEXAGON BOLT	2		Z00007071110	M10X55	0,000		
---	0636.100.341		HEXAGON BOLT	2		Z00007071113	M10X55	0,000		
---	0630.100.294		WASHER	2		Z00007158111		0,000		
66	0635.460.057		BALL	1			10,319	0,000		
84	1310.301.021		OIL TUBE	1				0,000		
150	---		SCREW PLUG	1			50N.M*O.DICHTRING M24X1,5KEG	0,000		
---	0736.300.221		SCREW PLUG	1		Z00012495111	M24X1,5KEG M24X1,5KEG	0,000		
160	---		SCREW PLUG	1			50N.M*O.DICHTRING M24X1,5KEG	0,000		
---	0736.300.221		SCREW PLUG	1		Z00012495111	M24X1,5KEG M24X1,5KEG	0,000		
170	---		SCREW PLUG	1			50N.M*O.DICHTRING M24X1,5KEG	0,000		
---	0736.300.221		SCREW PLUG	1		Z00012495111	M24X1,5KEG M24X1,5KEG	0,000		
176	0736.300.224		SCREW PLUG	1		Z00012536012	M24X1,5KEG M24X1,5KEG	0,000		
200	0736.300.221		SCREW PLUG	1		Z00012495111	M24X1,5KEG M24X1,5KEG	0,000		
210	---		SCREW PLUG	1		Z00010111513	35N.M*DICHTRING M18X1,5	0,000		
---	0636.100.791		SCREW PLUG	1		Z00010111521	M18X1,5	0,000		

# Parts list

Page 2 from 3

Material number: 1350.003.037

6 S 1200 BO /

Plant: 061.01.01-1

Material-assembly-group-no: 1310.101.047



Pos.	Material number	Customer material	Name	Quantity	ME	Amend. no.	Techn. Info.	Weight	Rep kit	Alternative material
---	0634.801.062		SEALING RING	1		Z00010111521	18X24	0,001		
230	0736.300.271		SCREW PLUG	1			M24X1,5KEG	0,000		
240	0736.300.221		SCREW PLUG	1		Z00012495111	M24X1,5KEG M24X1,5KEG	0,000		
250	---		TYPE PLATE	1		C01001056E10		0,000		
---	0730.365.241		TYPE PLATE	1			EINHEITSSCH. VERDREHSICHER	0,000		
---	0730.365.171		TYPE PLATE	1			ZF HUNGARIA	0,000		
---	0730.365.202		TYPE PLATE	1			ZF DRIVETECH CHINA ECOLITE	0,000		
260	1310.201.003		OIL TUBE	1			KPL. IN 1310 212 004(3)	0,000		
270	---		SCREW PLUG	1			10N.M*O.DICHTRING M10X1	0,000		
---	0636.301.076		SCREW PLUG	1		Z00010158012	M10X1	0,000		
400	1310.305.013		IDLER GEAR	1				0,000		
410	0750.115.233		NEEDLE CAGE	2			30,0X38,0X30,0	0,000		
420	1310.305.001		PIN	1				0,000		
430	0634.316.221		O-RING	1		C01001587A10	26X2	0,000		
440	1310.305.015		TAB WASHER	1				0,000		
450	0636.015.681		HEXAGON BOLT	1		Z00007072811	M8X18	0,010		
470	1310.301.024		COVER	1			ENTHALT.IN 1310 301 038(1)	0,000		
480	---		HEXAGON BOLT	7			M8X35	0,000		
---	0636.100.628		HEXAGON BOLT	7			M8X35	0,000		
---	0630.100.295		WASHER	7		Z00007158415		0,000		
484	---		HEXAGON BOLT	1			M8X35	0,000		
---	0636.100.628		HEXAGON BOLT	1			M8X35	0,000		
---	0630.100.295		WASHER	1		Z00007158415		0,000		
490	0501.313.195		SCREEN SHEET	1				0,000		
500	1238.308.201	5006880	GASKET	1			ENTHALT.IN 1238 308 202(2)	0,000		

# Parts list

Page 3 from 3

Material number: 1350.003.037

6 S 1200 BO /

Plant: 061.01.01-1

Material-assembly-group-no: 1310.101.047



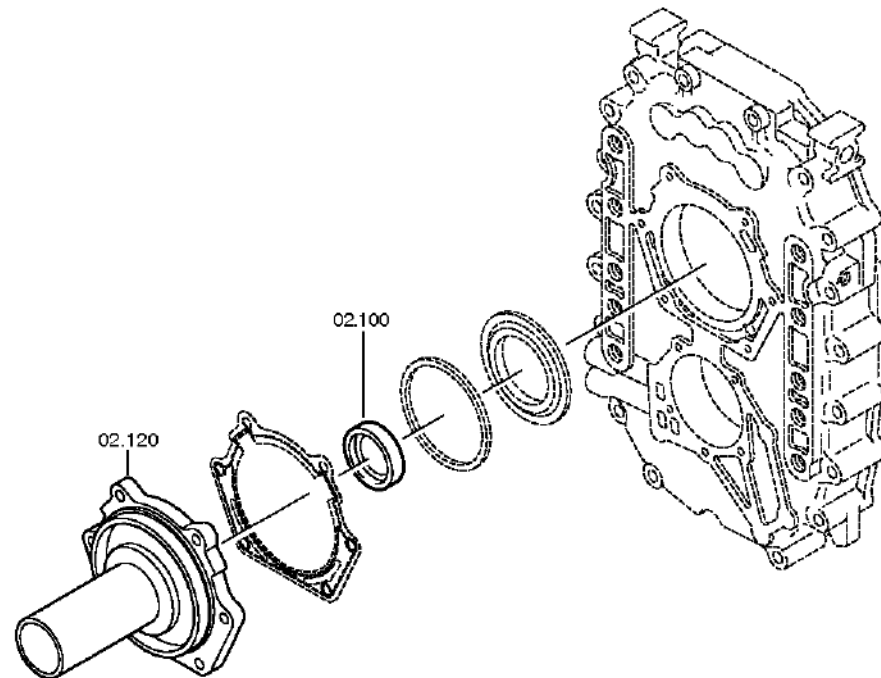
Pos.	Material number	Customer material	Name	Quantity	ME	Amend. no.	Techn. Info.	Weight	Rep kit	Alternative material
510	1328.301.170	1878388	COVER	1		Z00008068012		0,000		
520	0636.016.406		HEXAGON BOLT	4		Z00007061014	M12X25	0,000		
600	0501.313.640		GASKET	1				0,000		
610	1310.301.116		COVER	1		Z00008806210		0,000		
620	0636.016.413		HEXAGON BOLT	5		Z00007073211	M10X28	0,000		
630	0736.300.221		SCREW PLUG	1		Z00012495111	M24X1,5KEG M24X1,5KEG	0,000		
710	---		BREATHER	1			M10X1KEG	0,000		
---	0501.218.540		BREATHER	1				0,000		

# Plant

Page 1 from 3

Material number: 1350.003.037  
Plant: 061.02.40-1  
INPUT SHAFT

6 S 1200 BO /  
CONNPLATE

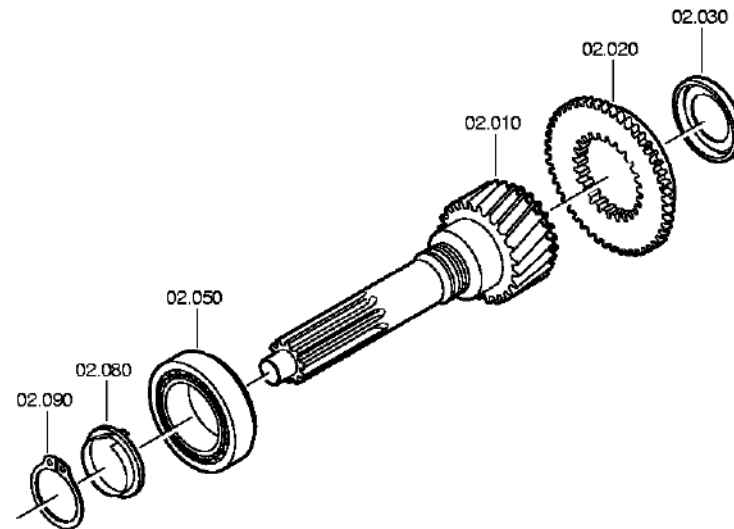


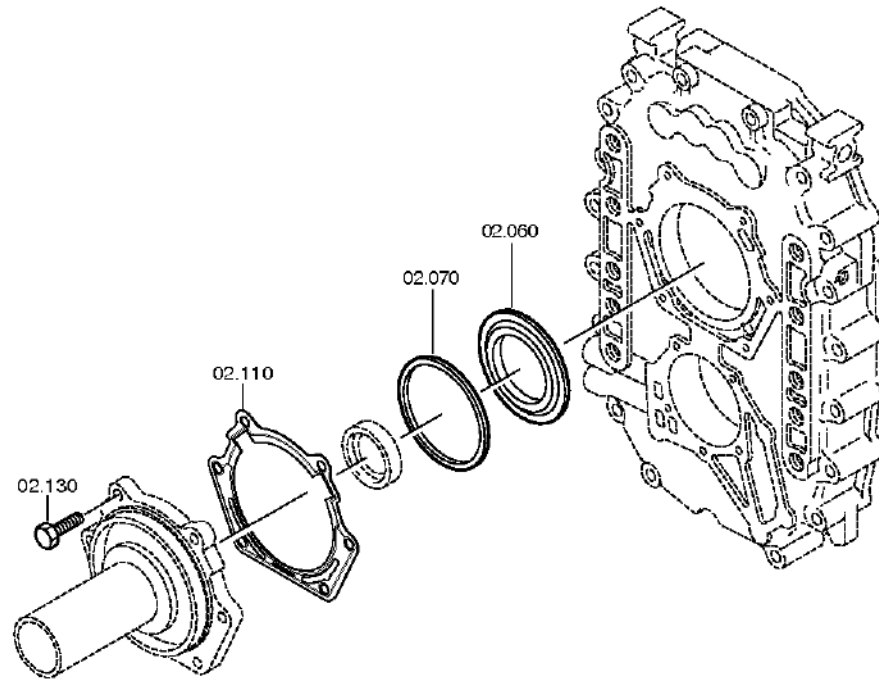
# Plant

Page 2 from 3

Material number: 1350.003.037  
Plant: 061.02.01-1  
INPUT SHAFT

6 S 1200 BO /  
CONNPLATE







# Parts list

Page 1 from 2

Material number: 1350.003.037

6 S 1200 BO /

Plant: 061.02.40-1

Material-assembly-group-no: 1311.102.406



Pos.	Material number	Customer material	Name	Quantity	ME	Amend. no.	Techn. Info.	Weight	Rep kit	Alternative material
10	1310.302.001	81.32205-0237	INPUT SHAFT	1			ENTHALT.IN 1310 302 009(0)	0,000		
20	1310.302.023		CLUTCH BODY	1			ENTHALT.IN 1311 302 049(1)	0,000		
30	0501.313.171		OIL DAM	1				0,000		
50	0750.117.347		TAROLLBEARING	1			70,0X115,0X29,0	1,200		
60	1311.302.012		OIL DAM	1				0,000		
70	---		WASHER	1			S= 1,00- 1,90( ABSTUFUNG:0,05MM)	0,000		
---	0730.006.750		WASHER	1			A=1,90 IN 0730 006 730(2)	0,000		
---	0730.006.729		WASHER	1			A=1,85 IN 0730 006 730(2)	0,000		
---	0730.006.749		WASHER	1			A=1,80 IN 0730 006 730(2)	0,000		
---	0730.006.728		WASHER	1			A=1,75 IN 0730 006 730(2)	0,000		
---	0730.006.748		WASHER	1			A=1,70 IN 0730 006 730(2)	0,000		
---	0730.006.727		WASHER	1			A=1,65 IN 0730 006 730(2)	0,000		
---	0730.006.747		WASHER	1			A=1,60 IN 0730 006 730(2)	0,000		
---	0730.006.726		WASHER	1			A=1,55 IN 0730 006 730(2)	0,000		
---	0730.006.746		WASHER	1			A=1,50 IN 0730 006 730(2)	0,000		
---	0730.006.725		WASHER	1			A=1,45 IN 0730 006 730(2)	0,000		
---	0730.006.745		WASHER	1			A=1,40 IN 0730 006 730(2)	0,000		

# Parts list

Page 2 from 2

Material number: 1350.003.037

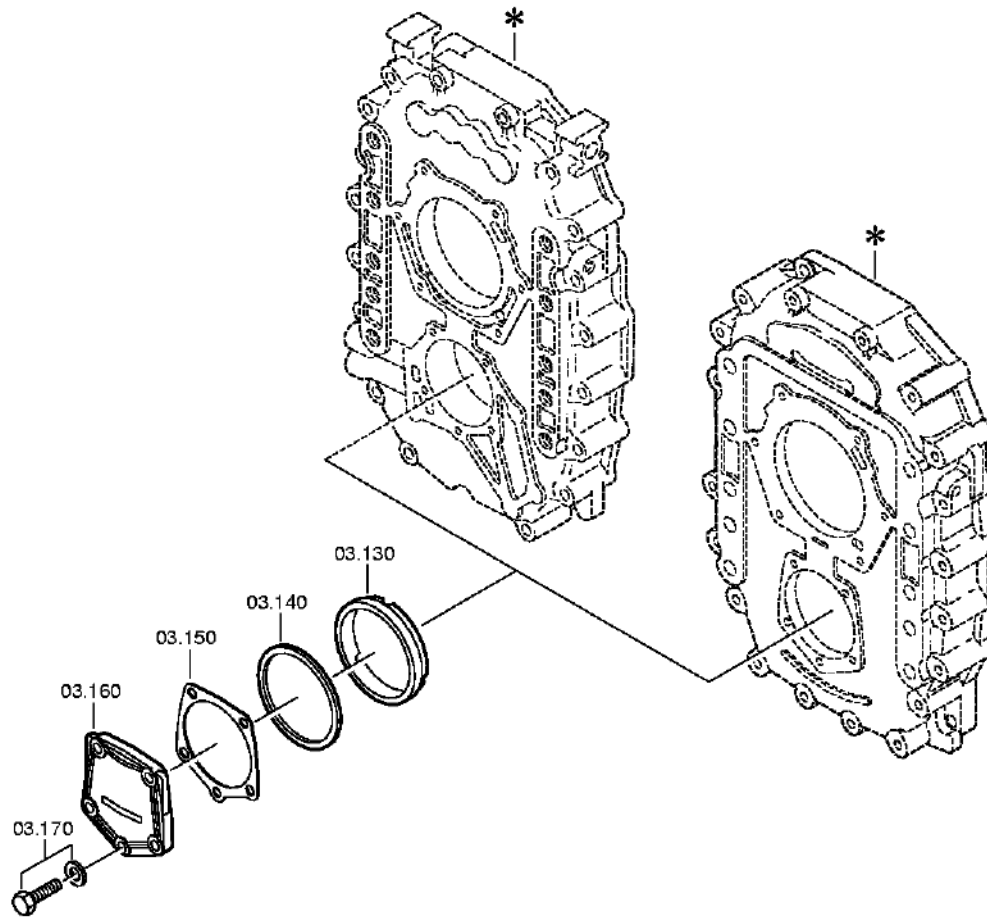
6 S 1200 BO /

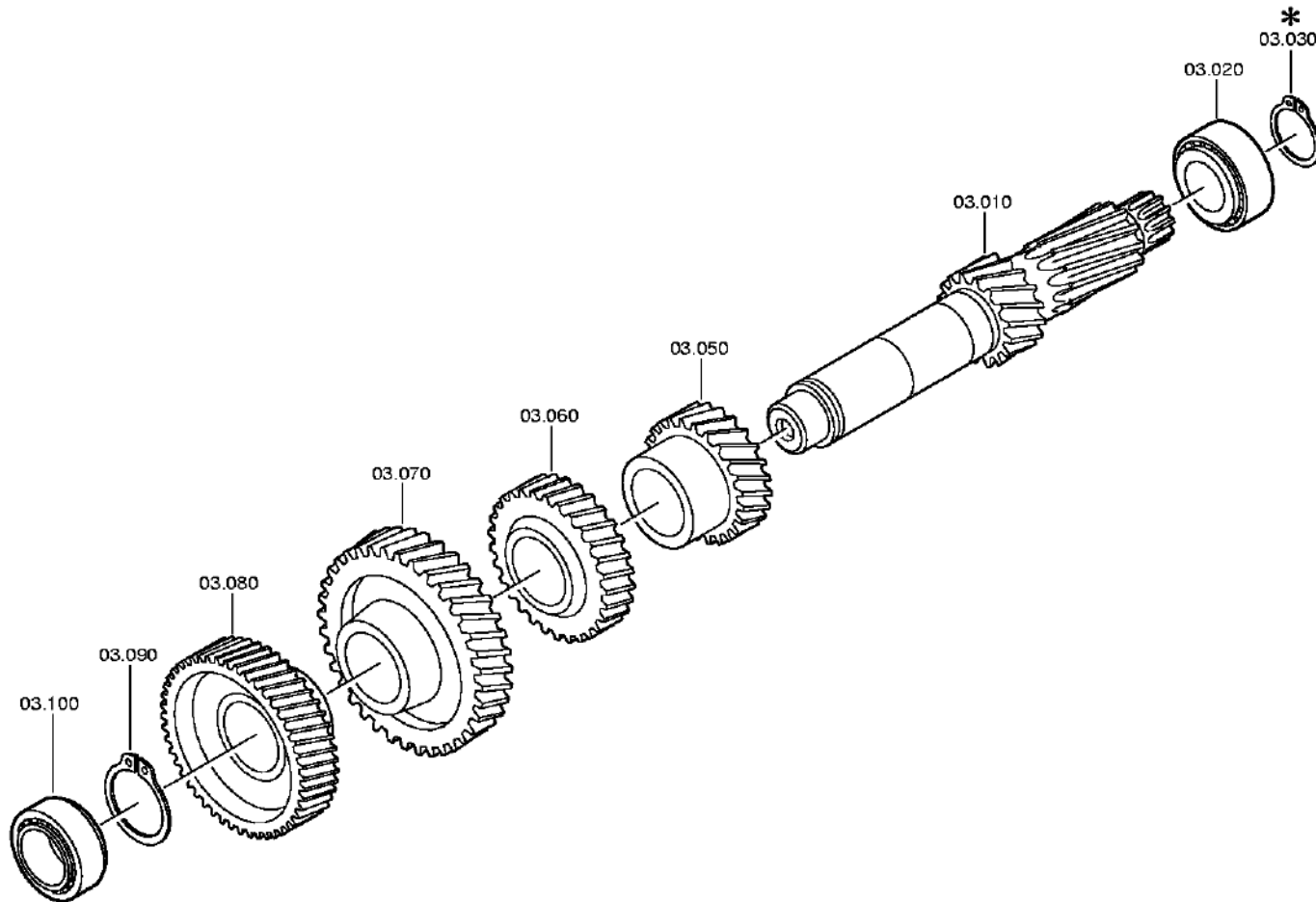
Plant: 061.02.40-1

Material-assembly-group-no: 1311.102.406



Pos.	Material number	Customer material	Name	Quantity	ME	Amend. no.	Techn. Info.	Weight	Rep kit	Alternative material
---	0730.006.724		WASHER	1			A=1,35 IN 0730 006 730(2)	0,000		
---	0730.006.744		WASHER	1			A=1,30 IN 0730 006 730(2)	0,000		
---	0730.006.723		WASHER	1			A=1,25 IN 0730 006 730(2)	0,000		
---	0730.006.743		WASHER	1			A=1,20 IN 0730 006 730(2)	0,000		
---	0730.006.722		WASHER	1			A=1,15 IN 0730 006 730(2)	0,000		
---	0730.006.742		WASHER	1			A=1,10 IN 0730 006 730(2)	0,000		
---	0730.006.721		WASHER	1			A=1,05 IN 0730 006 730(2)	0,000		
---	0730.006.741	5365-12-352-8951	WASHER	1			A=1,00 IN 0730 006 730(2)	0,000		
80	1311.202.002		SHEET	1			KPL.	0,000		
90	0630.501.034	1000000209	RETAINING RING	1			48X1,75	7		
100	0750.111.149	8204001590	SHAFT SEAL	1			48X65X10	0,000		
110	0501.317.402		GASKET	1				0,000		
120	1310.302.016		CONNPLATE	1			ENTHALT.IN 1311 302 031(0)	0,000		
130	0636.016.414	1869864	HEXAGON BOLT	6		Z00007059111	M8X28	0,000		





# Parts list

Page 1 from 3

Material number: 1350.003.037

6 S 1200 BO /

Plant: 061.03.80-1

Material-assembly-group-no: 1310.103.801



Pos.	Material number	Customer material	Name	Quantity	ME	Amend. no.	Techn. Info.	Weight	Rep kit	Alternative material
10	1310.303.076		LAYSHAFT	1		C01004109A10	ENTHALT.IN 1310 303 034(1)	0,000		
20	0750.120.167		TAROLLBEARING	1		Z00012389811	44,4X95,2X28,5	0,000		
50	1310.303.031		HELICAL GEAR	1			3G/Z24 IN 1311 303 009(1)	0,000		
60	1310.303.051		HELICAL GEAR	1			4G/Z32 IN 1311 303 036(1)	0,000		
70	1310.303.033		HELICAL GEAR	1			6G/Z45 IN 1311 303 005(1)	0,000		
80	1310.303.032		HELICAL GEAR	1			KON/Z47 IN 1311 303 003(1)	0,000		
90	---		RETAINING RING	1			S= 1,80- 2,50( ABSTUFUNG:0,10MM)	0,000		
---	0630.501.047	VOE12743322	RETAINING RING	1			72X2,5	0,020		
---	0630.501.190	0929536821	RETAINING RING	1			72X2,4	0,000		
---	0630.501.189	0929536822	RETAINING RING	1			72X2,3	0,000		
---	0630.501.365		RETAINING RING	1			72X2,2	0,000		
---	0630.501.364		RETAINING RING	1			72X2,1	0,000		
---	0630.501.363		RETAINING RING	1			72X2	0,000		
---	0630.501.366		RETAINING RING	1			72X1,9	0,000		
---	0630.501.373		RETAINING RING	1			72X1,8	0,000		
100	0750.117.083	8504001600	TAROLLBEARING	1			50,8X95,2X27,7	0,000		
130	0730.162.555		RING	1			A=16,00	0,000		
140	---		SHIM	1			S= 1,60- 2,80( ABSTUFUNG:0,05MM)	0,000		
---	0730.110.636		SHIM	1			A=2,80 IN 0730 104 697(2)	0,000		
---	0730.110.635		SHIM	1			A=2,75 IN 0730 104 697(2)	0,000		
---	0730.103.271	500403008	SHIM	1			A=2,70 IN 0730 104 697(2)	0,000		

# Parts list

Page 2 from 3

Material number: 1350.003.037

6 S 1200 BO /

Plant: 061.03.80-1

Material-assembly-group-no: 1310.103.801



Pos.	Material number	Customer material	Name	Quantity	ME	Amend. no.	Techn. Info.	Weight	Rep kit	Alternative material
---	0730.103.270		SHIM	1			A=2,65 IN 0730 104 697(2)	0,000		
---	0730.103.269		SHIM	1			A=2,60 IN 0730 104 697(2)	0,000		
---	0730.103.268		SHIM	1			A=2,55 IN 0730 104 697(2)	0,000		
---	0730.103.267		SHIM	1			A=2,50 IN 0730 104 697(2)	0,000		
---	0730.103.266		SHIM	1			A=2,45 IN 0730 104 697(2)	0,000		
---	0730.103.265		SHIM	1			A=2,40 IN 0730 104 697(2)	0,000		
---	0730.103.264		SHIM	1			A=2,35 IN 0730 104 697(2)	0,000		
---	0730.103.263		SHIM	1			A=2,30 IN 0730 104 697(2)	0,000		
---	0730.104.619		SHIM	1			A=2,25 IN 0730 104 697(2)	0,000		
---	0730.100.972		SHIM	1			A=2,20 IN 0730 104 697(2)	0,000		
---	0730.101.551		SHIM	1			A=2,15 IN 0730 104 697(2)	0,000		
---	0730.100.973		SHIM	1			A=2,10 IN 0730 104 697(2)	0,000		
---	0730.101.552		SHIM	1			A=2,05 IN 0730 104 697(2)	0,000		
---	0730.100.974	500424608	SHIM	1			A=2,00 IN 0730 104 697(2)	0,000		
---	0730.101.553		SHIM	1			A=1,95 IN 0730 104 697(2)	0,000		
---	0730.100.975		SHIM	1			A=1,90 IN 0730 104 697(2)	0,000		

# Parts list

Page 3 from 3

Material number: 1350.003.037

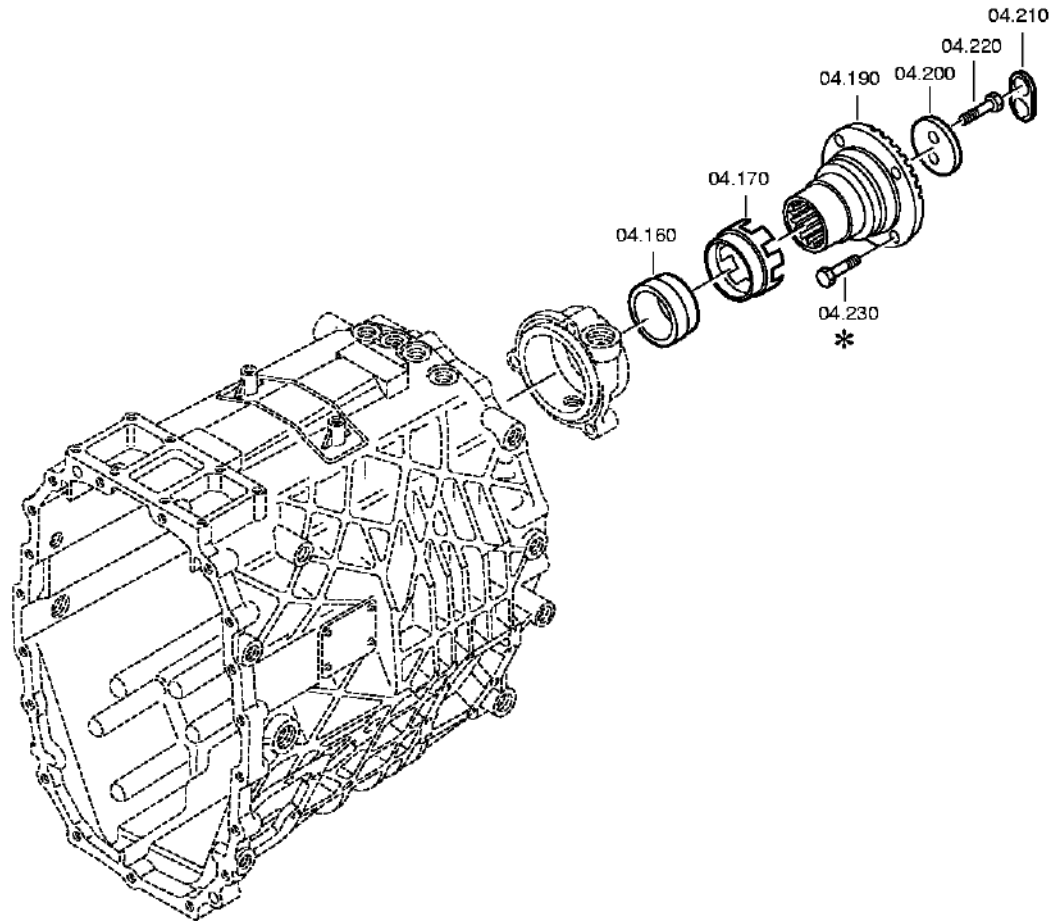
6 S 1200 BO /

Plant: 061.03.80-1

Material-assembly-group-no: 1310.103.801



Pos.	Material number	Customer material	Name	Quantity	ME	Amend. no.	Techn. Info.	Weight	Rep kit	Alternative material
---	0730.101.554		SHIM	1			A=1,85 IN 0730 104 697(2)	0,000		
---	0730.100.976		SHIM	1			A=1,80 IN 0730 104 697(2)	0,000		
---	0730.101.555		SHIM	1			A=1,75 IN 0730 104 697(2)	0,000		
---	0730.101.309		SHIM	1			A=1,70 IN 0730 104 697(2)	0,000		
---	0730.101.556		SHIM	1			A=1,65 IN 0730 104 697(2)	0,000		
---	0730.101.310		SHIM	1			A=1,60 IN 0730 104 697(2)	0,000		
150	0501.313.044		GASKET	1				0,000		
160	1310.301.035		COVER	1				0,000		
170	---		HEXAGON BOLT	5			M8X35	0,000		
---	0636.100.628		HEXAGON BOLT	5			M8X35	0,000		
---	0630.100.295		WASHER	5		Z00007158415		0,000		



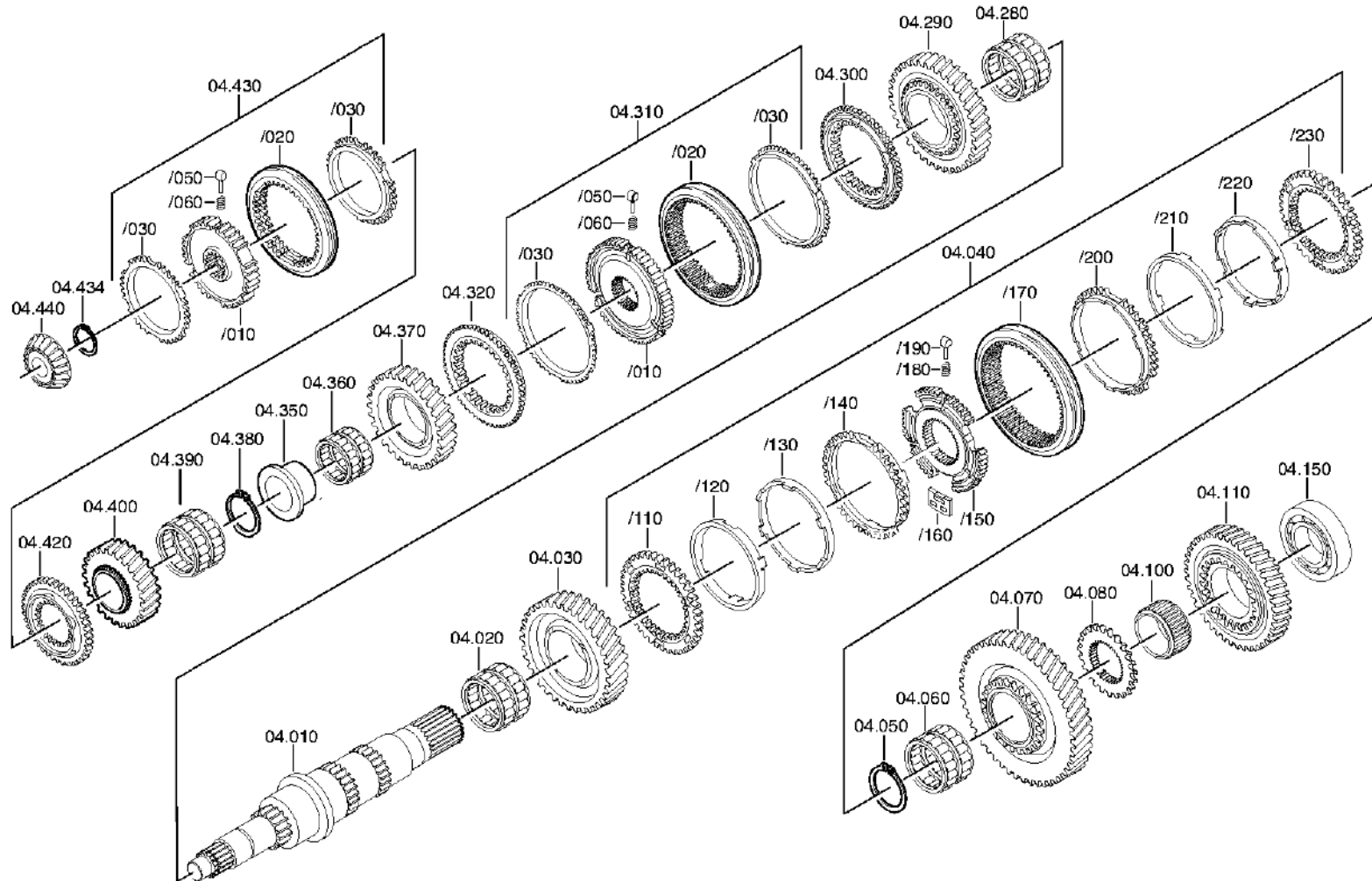


# Plant

Page 2 from 2

Material number: 1350.003.037  
Plant: 061.04.02-1  
MAIN SHAFT

6 S 1200 BO /  
MAIN SHAFT



# Parts list

Page 1 from 3

Material number: 1350.003.037

6 S 1200 BO /

Plant: 061.04.46-1

Material-assembly-group-no: 1311.104.453



Pos.	Material number	Customer material	Name	Quantity	ME	Amend. no.	Techn. Info.	Weight	Rep kit	Alternative material
10	1311.304.248		MAIN SHAFT	1				0,000		
20	0735.321.106		NEEDLE CAGE	1			80,0X88,0X48,0 FA.INA	0,000		
30	1310.304.012		HELICAL GEAR	1			2G/Z43 IN 1310 304 116(1)	0,000		
40	1310.204.026		SYNCHRONIZER	1		C01005465A10	KPL.1+2G*DK	0,000		
/110	1312.304.106	5 5328 0	CLUTCH DISC	1				0,000		
/120	1268.304.424	5 5280 0	INNER RING	1				0,000		
/130	1268.304.494	820-400-2510	INTERMRING	1			ENTHALT.IN 6002 306 153(0)	0,000		
/140	1268.304.525	133-441-1590	OUTER RING	1			ENTHALT.IN 1310 304 095(1)	0,000		
/150	1310.304.157		SYNCHROBODY	1			1+2G	0,000		
/160	1312.304.159		COUPLING ELEMENT	3		C01006892A10		0,030		
/170	1310.304.175	5 5320 0	SLIDING SLEEVE	1		C01007317F10		0,000		
/180	0732.040.409		COMPRSPRING	3				0,002		
/190	1297.304.436		PRESSURE PIECE	3				0,004		
/200	1268.304.525	133-441-1590	OUTER RING	1			ENTHALT.IN 1310 304 095(1)	0,000		
/210	1268.304.494	820-400-2510	INTERMRING	1			ENTHALT.IN 6002 306 153(0)	0,000		
/220	1268.304.424	5 5280 0	INNER RING	1				0,000		
/230	1312.304.106	5 5328 0	CLUTCH DISC	1				0,000		
50	---		RETAINING RING	1			S= 3,80- 4,00( ABSTUFUNG:0,10MM)	0,000		
---	0630.531.087		RETAINING RING	1			75X4	0,000		
---	0630.531.102		RETAINING RING	1			75X3,9	0,000		
---	0630.531.103		RETAINING RING	1			75X3,8	0,000		
60	0735.321.108		NEEDLE CAGE	1			75,0X83,0X50,0 FA.INA	0,000		
70	1310.304.011		HELICAL GEAR	1			1G/Z50 IN 1310 304 114(1)	0,000		

# Parts list

Page 2 from 3

Material number: 1350.003.037

6 S 1200 BO /

Plant: 061.04.46-1

Material-assembly-group-no: 1311.104.453



Pos.	Material number	Customer material	Name	Quantity	ME	Amend. no.	Techn. Info.	Weight	Rep kit	Alternative material
80	1311.304.250		CLUTCH BODY	1			ENTHALT.IN 1311 304 070(2)	0,000		
100	0735.298.255		NEEDLE BEARING	1		C01004227A10	70,0X86,0X42,5 FA.INA KPL	0,000		
110	1310.304.200		HELICAL GEAR	1		C01000656A10	RG	0,000		
150	0735.370.730		TAROLLBEARING	1			60,0X120,0X29,7 FA.TIMKEN	0,000		
160	1311.304.055		BUSH	1			ENTHALT.IN 1311 304 165(2)	0,000		
170	1311.304.056		COUNTING DISC	1				0,000		
190	1310.304.134		OUTPUT FLANGE	1			ENTHALT.IN 1310 304 009(1)	0,000		
200	1250.304.218		WASHER	1			ENTHALT.IN 1240 304 427(2)	0,000		
210	---		TAB WASHER	1				0,000		
---	1250.304.353	00560852	TAB WASHER	1				14		
220	0636.016.407		HEXAGON BOLT	2		Z00009111110	M12X50	0,000		
230	---		HEXAGON BOLT	4			SCHUTZHUELSE M14X1,5X50	0,000		
---	0636.021.059		HEXAGON BOLT	4			M14X1,5X50	0,070		
280	0735.321.106		NEEDLE CAGE	1			80,0X88,0X48,0 FA.INA	0,000		
290	1310.304.085		HELICAL GEAR	1			3G/Z35 IN 1310 304 084(1)	0,000		
300	1312.304.027	133-461-3080	CLUTCH BODY	1			ENTHALT.IN 1310 304 107(1)	0,000		
310	1310.204.011		SYNCHRONIZER	1			KPL.3+4G*KW*D=150	0,000		
/10	1310.304.080		SYNCHROBODY	1			ENTHALT.IN 1310 304 102(1)	0,000		
/20	1310.304.202	133-421-3670	SLIDING SLEEVE	1		C01005377A10		0,000		
/30	1297.304.484	5 5304 0	SYNCHRO RING	2		C01003969B10		0,000		
/50	1297.304.436		PRESSURE PIECE	3				0,004		
/60	0732.040.409		COMPRSPRING	3		C01007317F10		0,002		

# Parts list

Page 3 from 3

Material number: 1350.003.037

6 S 1200 BO /

Plant: 061.04.46-1

Material-assembly-group-no: 1311.104.453



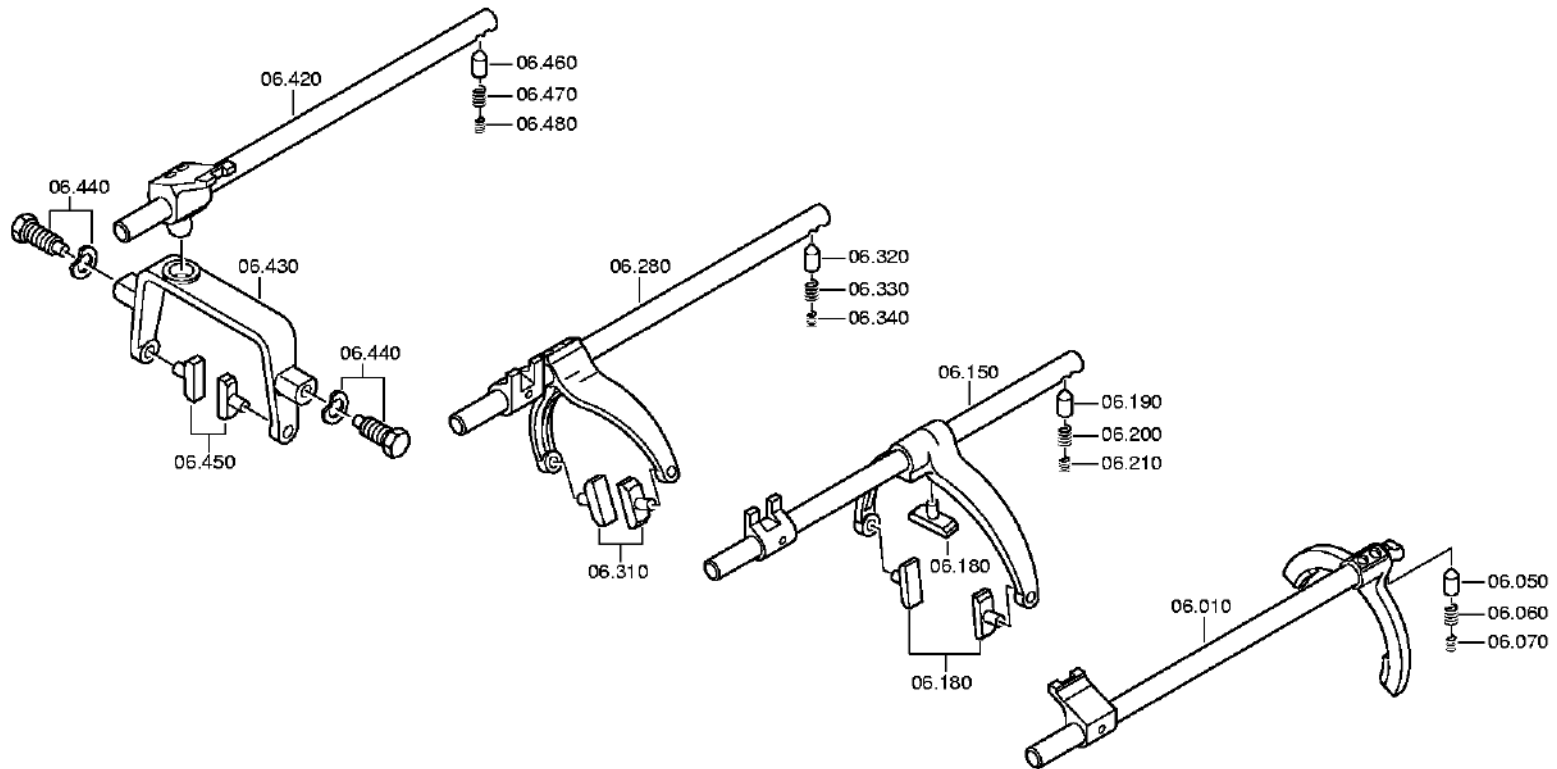
Pos.	Material number	Customer material	Name	Quantity	ME	Amend. no.	Techn. Info.	Weight	Rep kit	Alternative material
320	1312.304.027	133-461-3080	CLUTCH BODY	1			ENTHALT.IN 1310 304 107(1)	0,000		
350	1311.304.124		FLANGE BUSH	1				0,000		
360	0735.320.493	5007300	NEEDLE CAGE	1			70,0X78,0X37,0 FA.INA	0,000		
370	1310.304.088		HELICAL GEAR	1			4G/Z29 IN 1310 304 087(1)	0,000		
380	---		RETAINING RING	1		C01005615C10	S= 2,00- 2,30( ABSTUFUNG:0,10MM)	0,000		
---	0730.501.727		RETAINING RING	1			A=2,30	0,000		
---	0730.501.726		RETAINING RING	1			A=2,20	0,000		
---	0730.501.725		RETAINING RING	1			A=2,10	0,000		
---	0730.501.724		RETAINING RING	1			A=2,00	0,000		
390	0735.321.678	5 5838 0	NEEDLE CAGE	1			52,0X60,0X23,0 FA.INA	0,000		
400	1310.304.091		HELICAL GEAR	1			6G/Z23 IN 1310 304 090(1)	0,000		
420	1311.304.009		CLUTCH BODY	1				0,000		
430	1311.204.022		SYNCHRONIZER	1			KPL.5+6G	0,000		
/10	1311.304.226		SYNCHROBODY	1				0,000		
/20	1304.304.664	5 5346 0	SLIDING SLEEVE	1		C01001280A10	ZF-BK119	0,000		
/30	1311.304.255	5 5324 0	SYNCHRO RING	2		C01003969B10	ZF BK119	0,000		
/50	1297.304.436		PRESSURE PIECE	3				0,004		
/60	0732.040.409		COMPRSPRING	3		C01007317F10		0,002		
434	---		RETAINING RING	1			S= 2,30- 2,50( ABSTUFUNG:0,10MM)	0,000		
---	0630.531.061	3200136600	RETAINING RING	1			48X2,5	12		
---	0630.501.126		RETAINING RING	1			48X2,4	0,000		
---	0630.501.127		RETAINING RING	1			48X2,3	0,000		
440	0750.117.562	5 8300 0	TAROLLBEARING	1			28,0X32,0	0,000		

# Plant

Page 1 from 2

Material number: 1350.003.037  
Plant: 061.06.02-1  
GEAR SHIFT SYSTEM

6 S 1200 BO /  
GEAR SHIFT SYSTEM

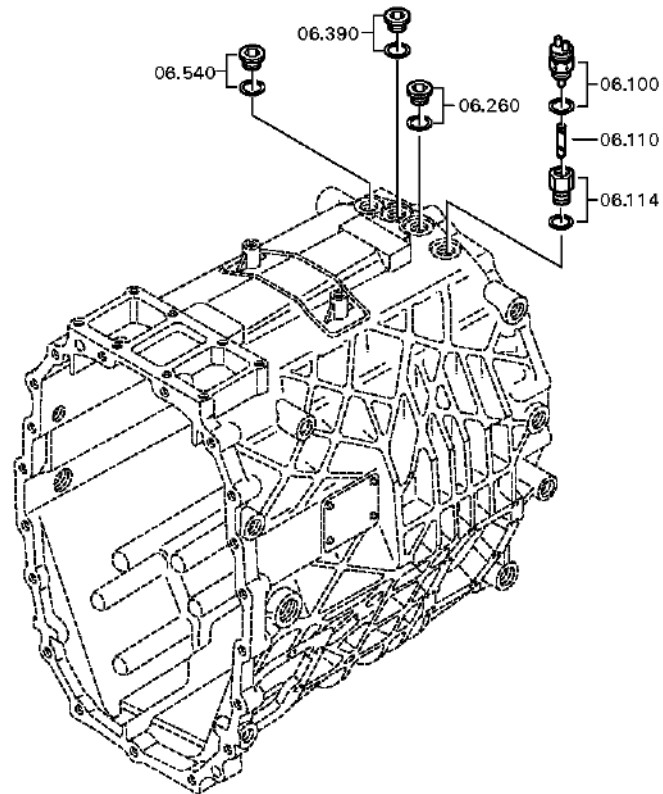


# Plant

Page 2 from 2

Material number: 1350.003.037  
Plant: 061.06.55-1  
GEAR SHIFT SYSTEM

6 S 1200 BO /  
GEAR SHIFT SYSTEM



# Parts list

Page 1 from 3

Material number: 1350.003.037

6 S 1200 BO /

Plant: 061.06.02-1

Material-assembly-group-no: 1310.106.026



Pos.	Material number	Customer material	Name	Quantity	ME	Amend. no.	Techn. Info.	Weight	Rep kit	Alternative material
10	1310.206.050		GEAR SHIFT RAIL	1			KPL.RG *WII	0,000		
50	1238.306.196	5004126	DETENT PIN	1			ENTHALT.IN 1238 306 281(2)	0,000		
60	1204.306.028		COMPRSPRING	1				4		
70	1204.306.027		COMPRSPRING	1				0,000		
100	---		SWITCH	1			OEFF*45N.M* DICHTRING	0,000		
---	0501.216.474		SWITCH	1				0,050		
---	---		SEALING RING	1			S= 2,20- 3,60( ABSTUFUNG:0,20MM)	0,000		
---	0730.150.606		SEALING RING	1			A=3,60	0,000		
---	0730.150.641		SEALING RING	1			A=3,40 IN 0730 150 439(2)	0,000		
---	0730.150.640		SEALING RING	1			A=3,20 IN 0730 150 439(2)	0,000		
---	0730.150.400	5007323	SEALING RING	1			A=3,00 IN 0730 150 439(2)	0,000		
---	0730.150.399	5330-12-302-4497	SEALING RING	1			A=2,80 IN 0730 150 439(2)	0,000		
---	0730.150.398	5330-12-302-4496	SEALING RING	1			A=2,60 IN 0730 150 439(2)	0,000		
---	0730.150.397	5330-12-302-4495	SEALING RING	1			A=2,40 IN 0730 150 439(2)	0,000		
---	0730.150.301	5330-12-199-6285	SEALING RING	1			A=2,20 IN 0730 150 439(2)	0,000		
110	0731.208.134		PIN	1			ENTHALT.IN 0731 208 103(2)	0,000		
114	---		ADAPTER	1			RG-ANZ*NG-ANZ M18X1,5	0,000		
---	1315.306.121		ADAPTER	1		Z00010002410		0,000		
---	0634.801.062		SEALING RING	1			18X24	0,001		
150	1310.206.031		GEAR SHIFT RAIL	1			KPL.1+2G*WII	0,000		

# Parts list

Page 2 from 3

Material number: 1350.003.037

6 S 1200 BO /

Plant: 061.06.02-1

Material-assembly-group-no: 1310.106.026



Pos.	Material number	Customer material	Name	Quantity	ME	Amend. no.	Techn. Info.	Weight	Rep kit	Alternative material
180	1290.306.066	1000001039	SLIDING PAD	3				0,037		
190	1238.306.196	5004126	DETENT PIN	1			ENTHALT.IN 1238 306 281(2)	0,000		
200	1204.306.028		COMPRSPRING	1				4		
210	1204.306.027		COMPRSPRING	1				0,000		
260	---		SCREW PLUG	1		Z00010111513	35N.M*DICHTRING M18X1,5	0,000		
---	0636.100.791		SCREW PLUG	1		Z00010111521	M18X1,5	0,000		
---	0634.801.062		SEALING RING	1		Z00010111521	18X24	0,001		
280	1310.206.048		GEAR SHIFT RAIL	1			KPL.3+4G*WII	0,000		
310	1290.306.066	1000001039	SLIDING PAD	2				0,037		
320	1238.306.196	5004126	DETENT PIN	1			ENTHALT.IN 1238 306 281(2)	0,000		
330	1204.306.028		COMPRSPRING	1				4		
340	1204.306.027		COMPRSPRING	1				0,000		
390	---		SCREW PLUG	1		Z00010111513	35N.M*DICHTRING M18X1,5	0,000		
---	0636.100.791		SCREW PLUG	1		Z00010111521	M18X1,5	0,000		
---	0634.801.062		SEALING RING	1		Z00010111521	18X24	0,001		
420	1310.206.008		GEAR SHIFT RAIL	1			KPL.5+6G	0,000		
430	1310.306.010		SHIFT CLAMP	1			ENTHALT.IN 1311 306 056(1)	0,000		
440	---		ARTICULATION BOLT	2			M18X1,5 SK6	0,000		
---	1346.306.091		ARTICULATION BOLT	2		Z00011059410		0,000		
---	0730.301.379	1882879	SPRING WASHER	2		Z00009160711	19X28 19X28	0,000		
450	1290.306.066	1000001039	SLIDING PAD	2				0,037		
460	1238.306.196	5004126	DETENT PIN	1			ENTHALT.IN 1238 306 281(2)	0,000		
470	1204.306.028		COMPRSPRING	1				4		
480	1204.306.027		COMPRSPRING	1				0,000		



# Parts list

Page 3 from 3

Material number: 1350.003.037

6 S 1200 BO /

Plant: 061.06.02-1

Material-assembly-group-no: 1310.106.026



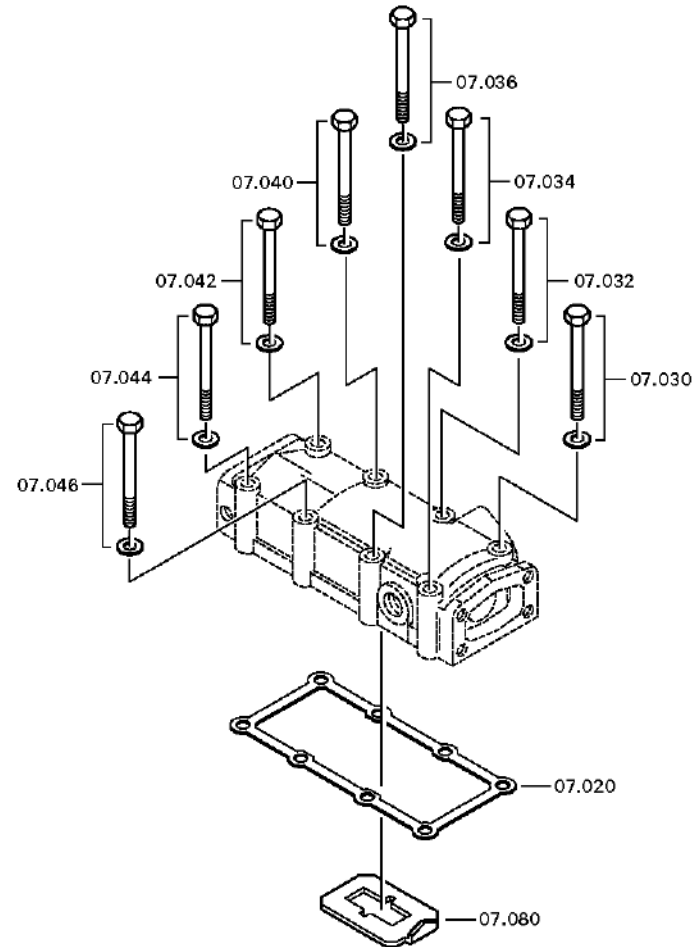
Pos.	Material number	Customer material	Name	Quantity	ME	Amend. no.	Techn. Info.	Weight	Rep kit	Alternative material
540	---		SCREW PLUG	1		Z00010111513	35N.M*DICHTRING M18X1,5	0,000		
---	0636.100.791		SCREW PLUG	1		Z00010111521	M18X1,5	0,000		
---	0634.801.062		SEALING RING	1		Z00010111521	18X24	0,001		

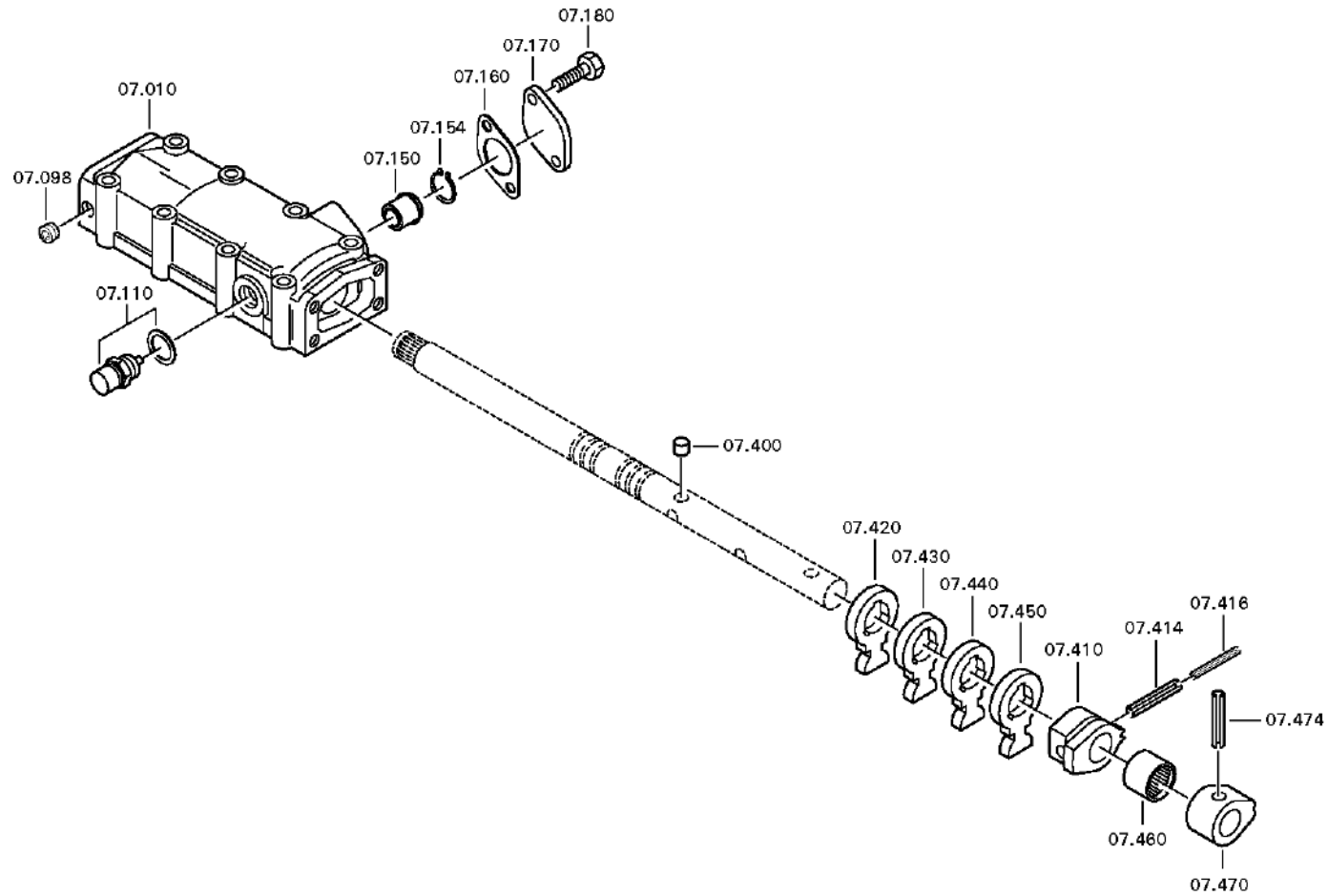
# Plant

Page 1 from 3

Material number: 1350.003.037  
Plant: 061.07.80-1  
GEAR SHIFT HOUSING

6 S 1200 BO /  
GEAR SHIFT HOUSING



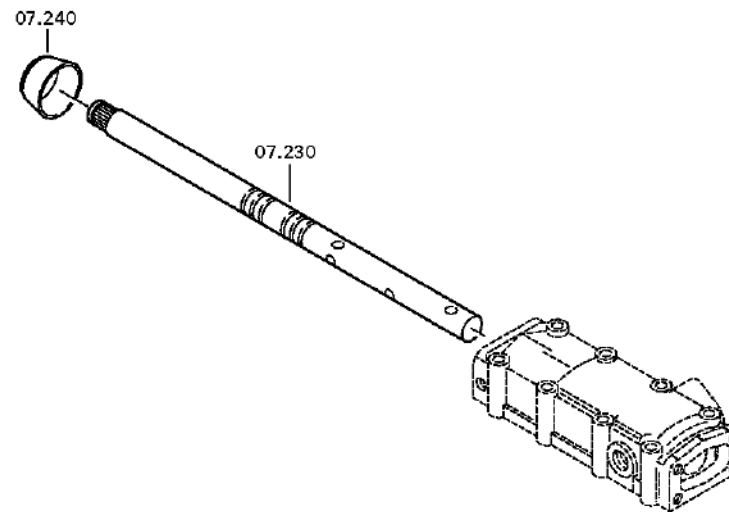


# Plant

Page 3 from 3

Material number: 1350.003.037  
Plant: 061.07.44-1  
GEAR SHIFT HOUSING

6 S 1200 BO /  
GEAR SHIFT HOUSING



# Parts list

Page 1 from 2

Material number: 1350.003.037

6 S 1200 BO /

Plant: 061.07.80-1

Material-assembly-group-no: 1311.107.803



Pos.	Material number	Customer material	Name	Quantity	ME	Amend. no.	Techn. Info.	Weight	Rep kit	Alternative material
10	1311.307.063		GEAR SHIFT HOUSING	1				0,000		
20	1311.307.002		GASKET	1				0,000		
30	---		HEXAGON BOLT	1		Z00007068911	M8X70	0,000		
---	0636.100.520		HEXAGON BOLT	1		Z00007068910	M8X70	0,000		
---	0630.100.295		WASHER	1				0,000		
32	---		HEXAGON BOLT	1		Z00007068911	M8X70	0,000		
---	0636.100.520		HEXAGON BOLT	1		Z00007068910	M8X70	0,000		
---	0630.100.295		WASHER	1				0,000		
34	---		HEXAGON BOLT	1		Z00007068911	M8X70	0,000		
---	0636.100.520		HEXAGON BOLT	1		Z00007068910	M8X70	0,000		
---	0630.100.295		WASHER	1				0,000		
36	---		HEXAGON BOLT	1		Z00007068911	M8X70	0,000		
---	0636.100.520		HEXAGON BOLT	1		Z00007068910	M8X70	0,000		
---	0630.100.295		WASHER	1				0,000		
40	---		HEXAGON BOLT	1		Z00007068911	M8X70	0,000		
---	0636.100.520		HEXAGON BOLT	1		Z00007068910	M8X70	0,000		
---	0630.100.295		WASHER	1				0,000		
42	---		HEXAGON BOLT	1		Z00007068911	M8X70	0,000		
---	0636.100.520		HEXAGON BOLT	1		Z00007068910	M8X70	0,000		
---	0630.100.295		WASHER	1				0,000		
44	---		HEXAGON BOLT	1		Z00007068911	M8X70	0,000		
---	0636.100.520		HEXAGON BOLT	1		Z00007068910	M8X70	0,000		
---	0630.100.295		WASHER	1				0,000		
46	---		HEXAGON BOLT	1		Z00007068911	M8X70	0,000		
---	0636.100.520		HEXAGON BOLT	1		Z00007068910	M8X70	0,000		
---	0630.100.295		WASHER	1				0,000		
80	1311.307.013		SHIFTING INTERLOCK	1				0,000		
98	0636.301.076		SCREW PLUG	1		Z00010158012	M10X1	0,000		
110	---		DETENT PLUNGER	1			240N*50N.M*90GRAD	0,000		
---	1324.207.018		DETENT PLUNGER	1			240 N	0,000		

# Parts list

Page 2 from 2

Material number: 1350.003.037

6 S 1200 BO /

Plant: 061.07.80-1

Material-assembly-group-no: 1311.107.803



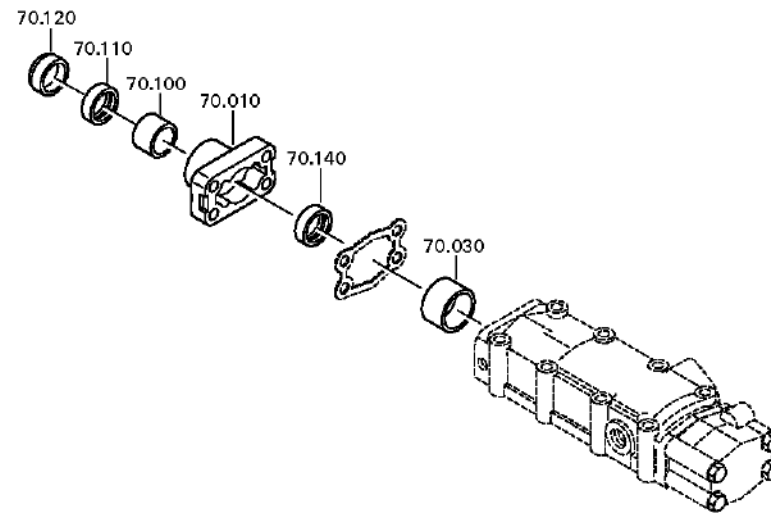
Pos.	Material number	Customer material	Name	Quantity	ME	Amend. no.	Techn. Info.	Weight	Rep kit	Alternative material
---	0634.100.176	REPLACEMENT FOR 0634.801.332	SEALING RING	1		Z00008473410	16X22	0,000		
150	0501.314.501		STOP PIN	1		C01009915E10		0,000		
154	---		RETAINING RING	1			S= 1,35- 1,75( ABSTUFUNG:0,10MM)	0,000		
---	0630.501.367		RETAINING RING	1			20X1,75	0,000		
---	0630.501.368		RETAINING RING	1			20X1,65	0,000		
---	0630.501.369		RETAINING RING	1			20X1,55	0,000		
---	0630.501.376		RETAINING RING	1			20X1,45	0,000		
---	0630.501.377		RETAINING RING	1			20X1,35	0,000		
160	1311.307.052		GASKET	1				0,000		
170	1311.307.074		COVER	1				0,000		
180	0636.100.612		HEXAGON BOLT	2		Z00007073014	M6X18	0,000		
230	1311.307.019		GEAR SHIFT SHAFT	1			ENTHALT.IN 1311 307 018(1)	0,000		
240	1324.307.268		PROTECTING CAP	1		Z00009174312		0,000		
400	0635.470.076		CYLROLLER	3			8X8	0,000		
410	1311.307.014		DETENT PART	1				0,000		
414	0631.329.073		SLOTPIN	1			6X45	0,000		
416	0631.329.145	5004141	SLOTPIN	1			3,5X40	0,000		
420	1311.307.005		DRIVER	1				0,000		
430	1311.307.005		DRIVER	1				0,000		
440	1311.307.005		DRIVER	1				0,000		
450	1311.307.005		DRIVER	1				0,000		
460	0635.303.053	35055200	NEEDLE SLEEVE	1			25X32X20	120		
470	1310.307.004		DETENT PART	1				0,000		
474	0631.329.071	1000000244	SLOTPIN	1			6X36	4,300		

# Plant

Page 1 from 4

Material number: 1350.003.037  
Plant: 061.08.02-1  
SHIFT TURRET

6 S 1200 BO /  
SHIFT TURRET

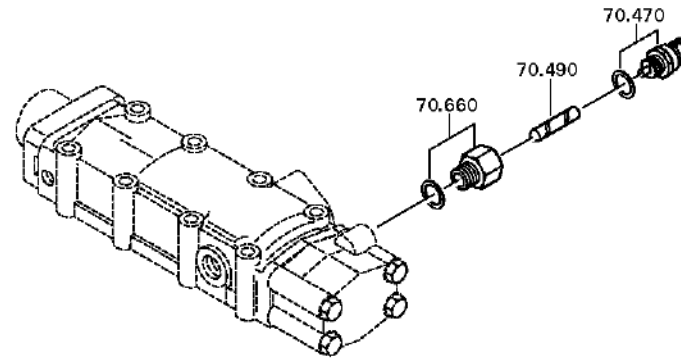


# Plant

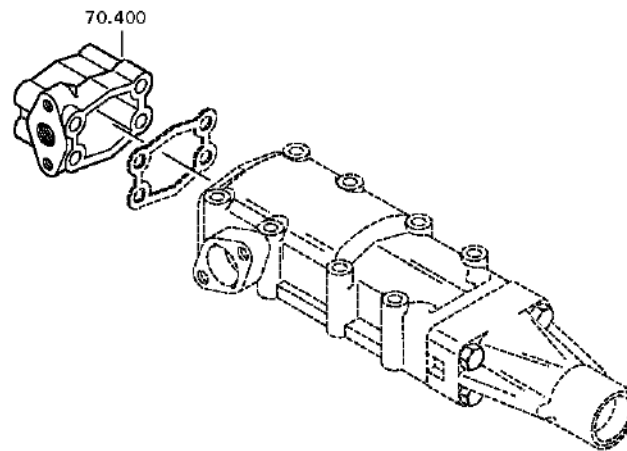
Page 2 from 4

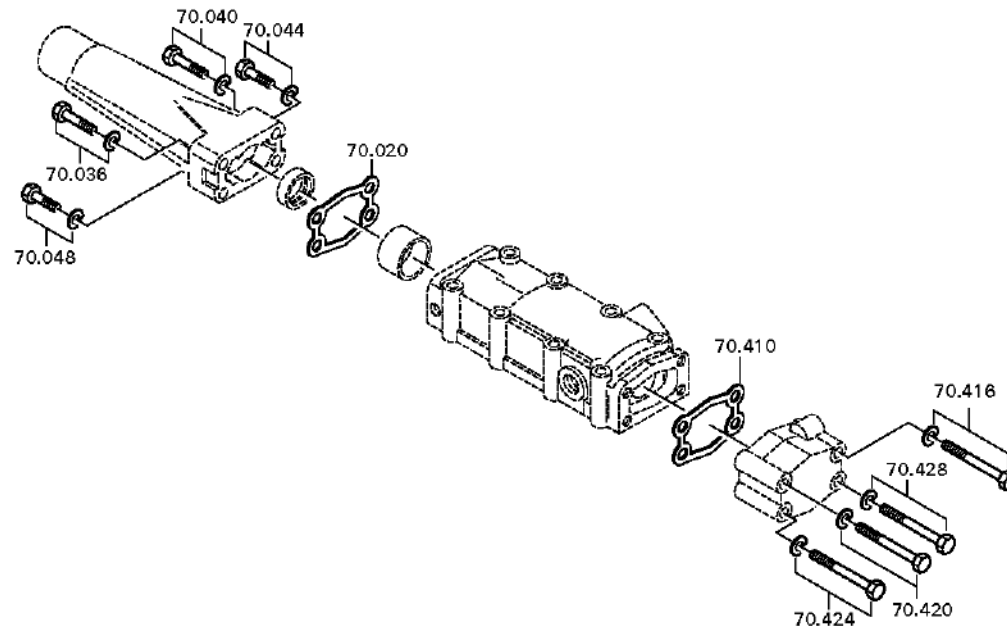
Material number: 1350.003.037  
Plant: 061.08.09-1  
SHIFT TURRET

6 S 1200 BO /  
SHIFT TURRET









# Parts list

Page 1 from 2

Material number: 1350.003.037

6 S 1200 BO /

Plant: 061.08.02-1

Material-assembly-group-no: 1311.170.004



Pos.	Material number	Customer material	Name	Quantity	ME	Amend. no.	Techn. Info.	Weight	Rep kit	Alternative material
10	1304.307.425		GEAR SHIFT COVER	1				0,000		
20	1304.307.177	1331981700	GASKET	1			ENTHALT.IN 1304 307 149(3)	0,000		
30	0730.301.264		BUSH	1		Z00009926710	A=14,80 14,80	0,000		
36	---		HEXAGON BOLT	1		Z00007891319	M8X30	0,000		
---	0636.100.797		HEXAGON BOLT	1		Z00007891310	M8X30	0,000		
---	0630.100.295		WASHER	1		Z00007158414		0,000		
40	---		HEXAGON BOLT	1		Z00007891319	M8X30	0,000		
---	0636.100.797		HEXAGON BOLT	1		Z00007891310	M8X30	0,000		
---	0630.100.295		WASHER	1		Z00007158414		0,000		
44	---		HEXAGON BOLT	1		Z00007891319	M8X30	0,000		
---	0636.100.797		HEXAGON BOLT	1		Z00007891310	M8X30	0,000		
---	0630.100.295		WASHER	1		Z00007158414		0,000		
48	---		HEXAGON BOLT	1		Z00007891319	M8X30	0,000		
---	0636.100.797		HEXAGON BOLT	1		Z00007891310	M8X30	0,000		
---	0630.100.295		WASHER	1		Z00007158414		0,000		
100	0730.260.330	5006867	BEARING BUSH	1			A=20,00 IN 0730 260 546(2)	0,000		
110	0634.300.302	5002333	SHAFT SEAL	1			25X35X7	0,000		
120	0634.307.367	2150035300	SCRAPER	1				0,009		
140	---		SHAFT SEAL	1			25X32X5	0,000		
---	0634.300.020	5006866	SHAFT SEAL	1			25X32X5	0,000		
400	1311.307.016		COVER	1				0,000		
410	1311.307.017		GASKET	1				0,000		
416	---		HEXAGON BOLT	1		Z00007068911	M8X70	0,000		
---	0636.100.520		HEXAGON BOLT	1		Z00007068910	M8X70	0,000		
---	0630.100.295		WASHER	1				0,000		
420	---		HEXAGON BOLT	1		Z00007068911	M8X70	0,000		
---	0636.100.520		HEXAGON BOLT	1		Z00007068910	M8X70	0,000		
---	0630.100.295		WASHER	1				0,000		
424	---		HEXAGON BOLT	1		Z00007068911	M8X70	0,000		

# Parts list

Page 2 from 2

Material number: 1350.003.037

6 S 1200 BO /

Plant: 061.08.02-1

Material-assembly-group-no: 1311.170.004



Pos.	Material number	Customer material	Name	Quantity	ME	Amend. no.	Techn. Info.	Weight	Rep kit	Alternative material
---	0636.100.520		HEXAGON BOLT	1		Z00007068910	M8X70	0,000		
---	0630.100.295		WASHER	1				0,000		
428	---		HEXAGON BOLT	1		Z00007068911	M8X70	0,000		
---	0636.100.520		HEXAGON BOLT	1		Z00007068910	M8X70	0,000		
---	0630.100.295		WASHER	1				0,000		
470	---		SWITCH	1			OEFF*45N.M* DICHTRING	0,000		
---	0501.216.474		SWITCH	1				0,050		
---	---		SEALING RING	1			S= 2,20- 3,60( ABSTUFUNG:0,20MM)	0,000		
---	0730.150.606		SEALING RING	1			A=3,60	0,000		
---	0730.150.641		SEALING RING	1			A=3,40 IN 0730 150 439(2)	0,000		
---	0730.150.640		SEALING RING	1			A=3,20 IN 0730 150 439(2)	0,000		
---	0730.150.400	5007323	SEALING RING	1			A=3,00 IN 0730 150 439(2)	0,000		
---	0730.150.399	5330-12-302-4497	SEALING RING	1			A=2,80 IN 0730 150 439(2)	0,000		
---	0730.150.398	5330-12-302-4496	SEALING RING	1			A=2,60 IN 0730 150 439(2)	0,000		
---	0730.150.397	5330-12-302-4495	SEALING RING	1			A=2,40 IN 0730 150 439(2)	0,000		
---	0730.150.301	5330-12-199-6285	SEALING RING	1			A=2,20 IN 0730 150 439(2)	0,000		
490	0731.208.134		PIN	1			ENTHALT.IN 0731 208 103(2)	0,000		
660	---		ADAPTER	1			RG-ANZ*NG-ANZ M18X1,5	0,000		
---	1315.306.121		ADAPTER	1		Z00010002410		0,000		
---	0634.801.062		SEALING RING	1			18X24	0,001		

# Plant

Page 1 from 1

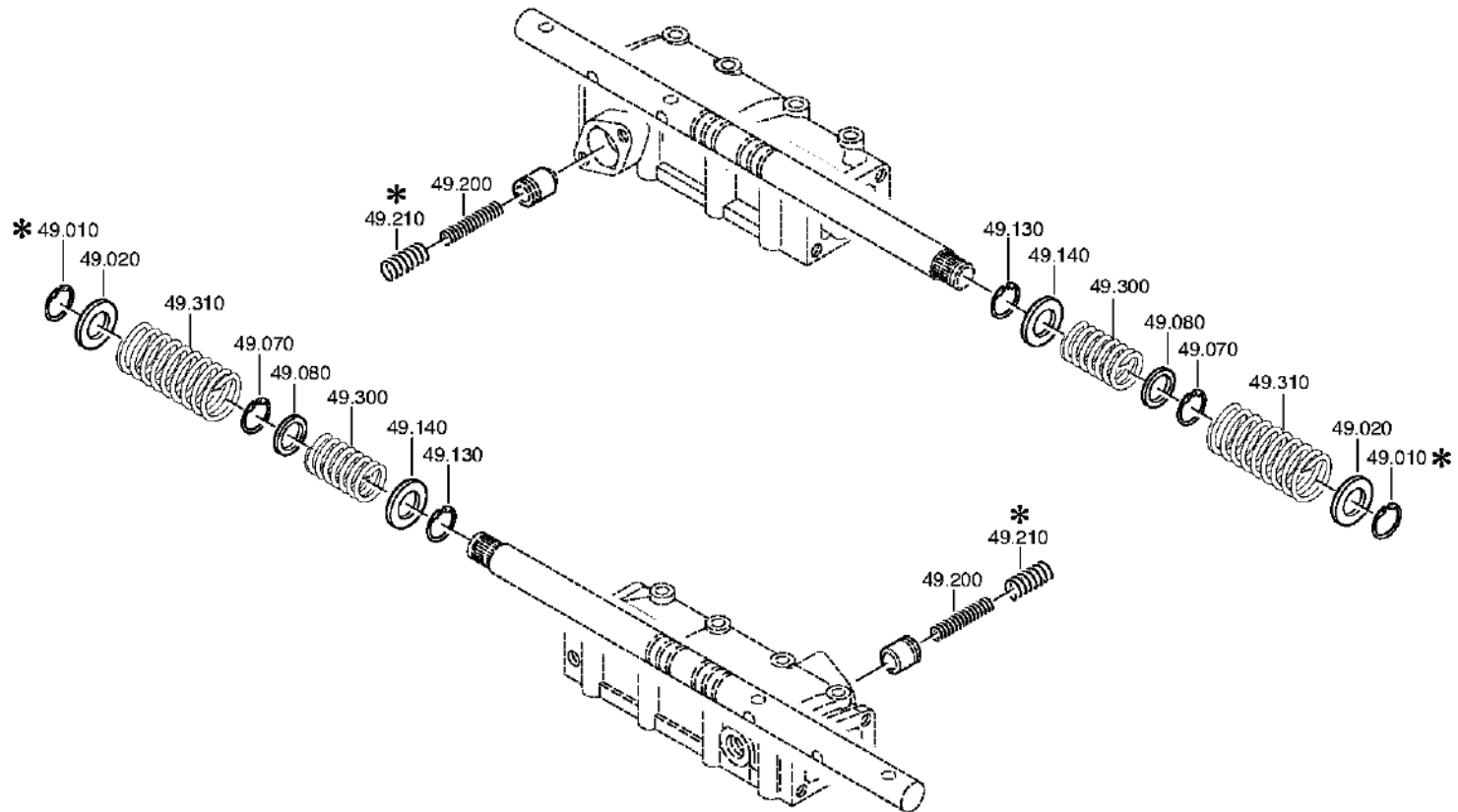
Material number: 1350.003.037

Plant: 061.12.03-1

Material-assembly-group-no: 1311.149.101

6 S 1200 BO /

SET OF SPRINGS



# Parts list

Page 1 from 1

Material number: 1350.003.037

6 S 1200 BO /

Plant: 061.12.03-1

Material-assembly-group-no: 1311.149.101



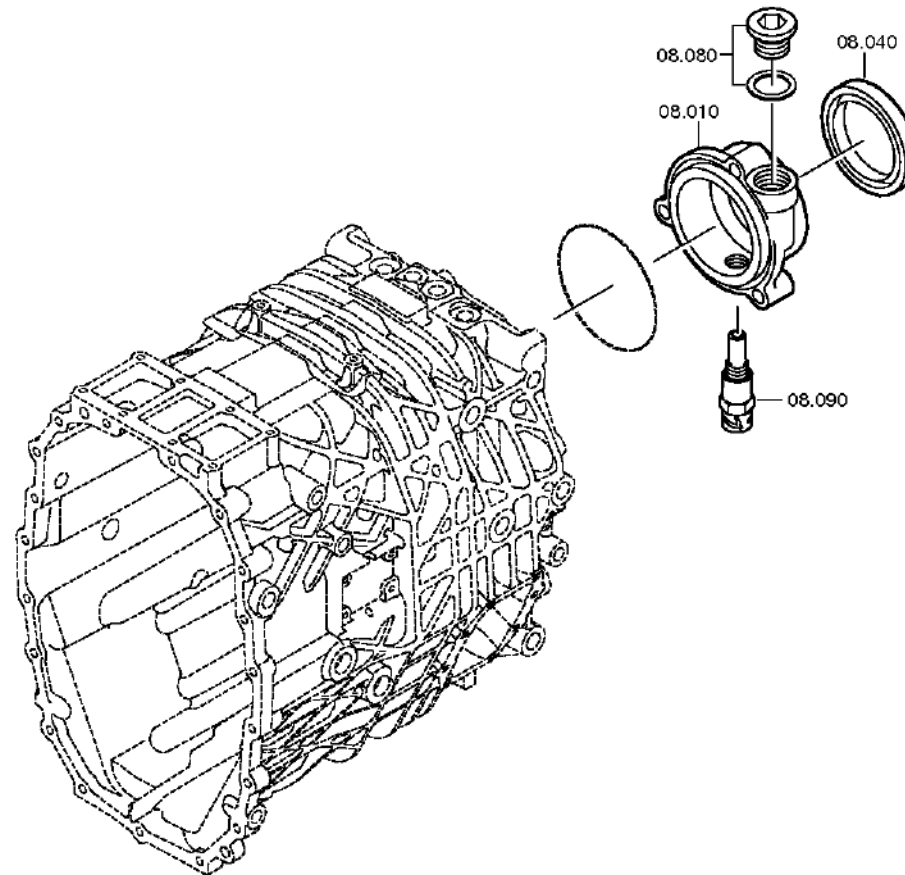
Pos.	Material number	Customer material	Name	Quantity	ME	Amend. no.	Techn. Info.	Weight	Rep kit	Alternative material
10	0630.531.229		V-RING	1				0,002		
20	0730.301.223		WASHER	1		Z00008917011	A=2,00 25,1X39,0X2,0	0,000		
70	0630.531.229		V-RING	1				0,002		
80	0730.301.222		WASHER	1		Z00008916912	A=2,00 25,1X30X2,0	0,000		
130	0630.531.229		V-RING	1				0,002		
140	0730.301.223		WASHER	1		Z00008917011	A=2,00 25,1X39,0X2,0	0,000		
200	0732.040.819	5 8399 0	COMPRSPRING	1				0,000		
300	0732.041.670		COMPRSPRING	1				0,000		
310	0732.040.630	0971350020	COMPRSPRING	1				0,000		

# Plant

Page 1 from 2

Material number: 1350.003.037  
Plant: 061.18.01-1  
SPEEDOMETER COVER

6 S 1200 BO /  
SPEEDOMETER COVER

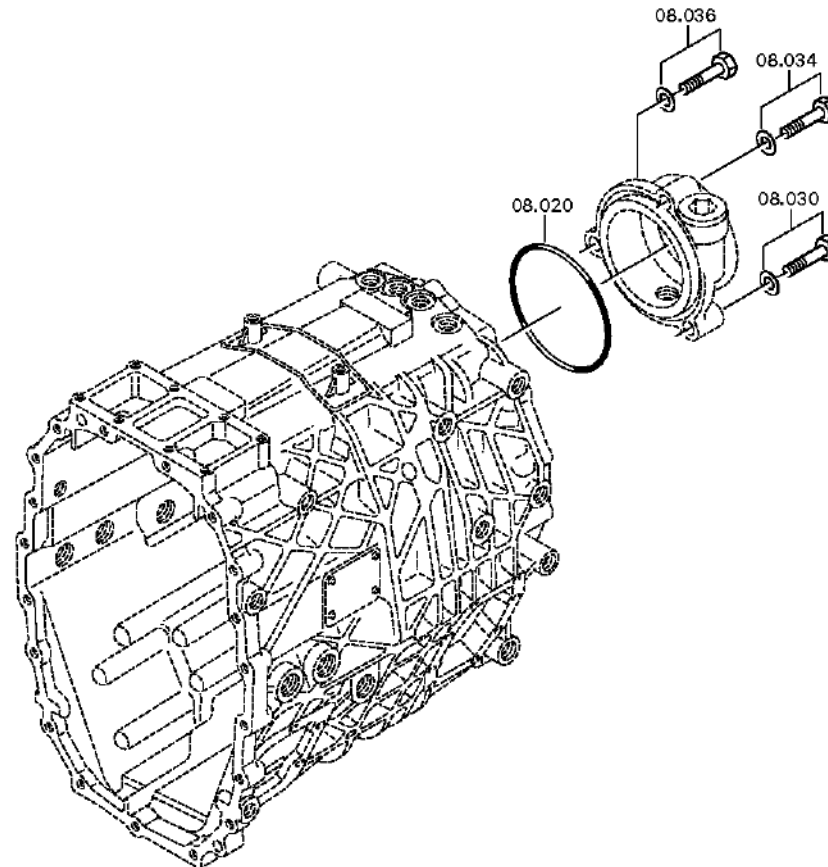


# Plant

Page 2 from 2

Material number: 1350.003.037  
Plant: 061.18.82-1  
SPEEDOMETER COVER

6 S 1200 BO /  
SPEEDOMETER COVER





# Parts list

Page 1 from 1

Material number: 1350.003.037

6 S 1200 BO /

Plant: 061.18.01-1

Material-assembly-group-no: 1311.108.013



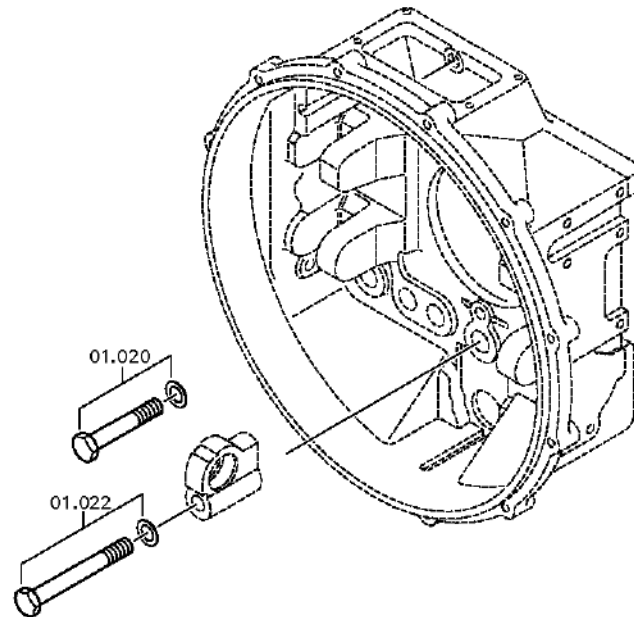
Pos.	Material number	Customer material	Name	Quantity	ME	Amend. no.	Techn. Info.	Weight	Rep kit	Alternative material
10	1311.301.031		SPEEDOMETER COVER	1				0,000		
20	0634.313.100		O-RING	1		C01006137A10	113X3	0,000		
30	---		HEXAGON BOLT	1		Z00008808815	M10X50	0,000		
---	0636.100.416		HEXAGON BOLT	1		Z00007059713	M10X50	0,000		
---	0630.100.294		WASHER	1		Z00007158112		0,000		
34	---		HEXAGON BOLT	1		Z00008808815	M10X50	0,000		
---	0636.100.416		HEXAGON BOLT	1		Z00007059713	M10X50	0,000		
---	0630.100.294		WASHER	1		Z00007158112		0,000		
36	---		HEXAGON BOLT	1			M10X50SK	0,000		
---	0636.100.339		HEXAGON BOLT	1		Z00007069511	M10X50	0,000		
---	0630.100.294		WASHER	1		Z00007158111		0,000		
40	0750.111.334	8 8318 0	SHAFT SEAL	1			80X100X10	0,000		
80	---		SCREW PLUG	1		Z00010111812	M30X1,5	0,000		
---	0636.302.610		SCREW PLUG	1		Z00010111815	M30X1,5	0,000		
---	0634.100.177		SEALING RING	1		Z00007922012	30X36	0,000		
90	---		PULSE SENSOR	1			45N.M*O.DICHTRING* BAJONETT*L=19,8	0,000		
---	0501.210.855		PULSE SENSOR	1				0,090		

# Plant

Page 1 from 3

Material number: 1350.003.037  
Plant: 061.92.78-1  
CLUTCH HOUSING

6 S 1200 BO /  
ANCHORAGE

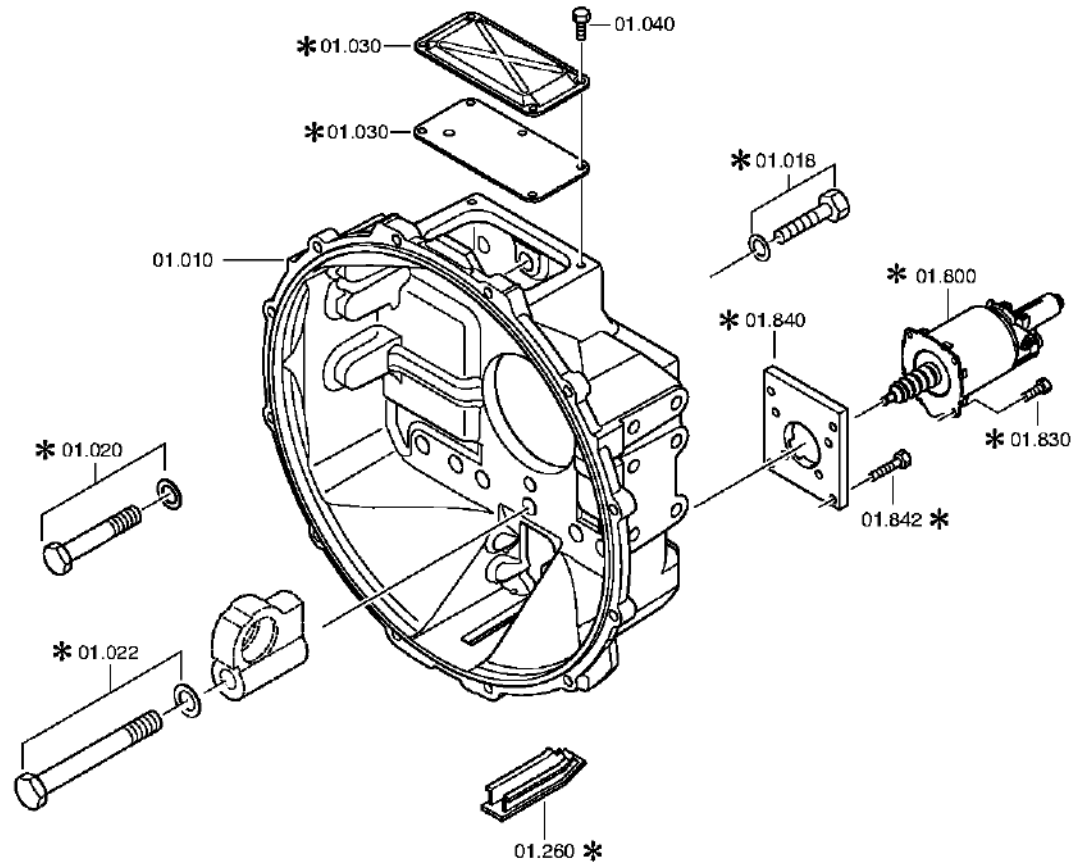


# Plant

Page 2 from 3

Material number: 1350.003.037  
Plant: 061.92.59-1  
CLUTCH HOUSING

6 S 1200 BO /  
ANCHORAGE

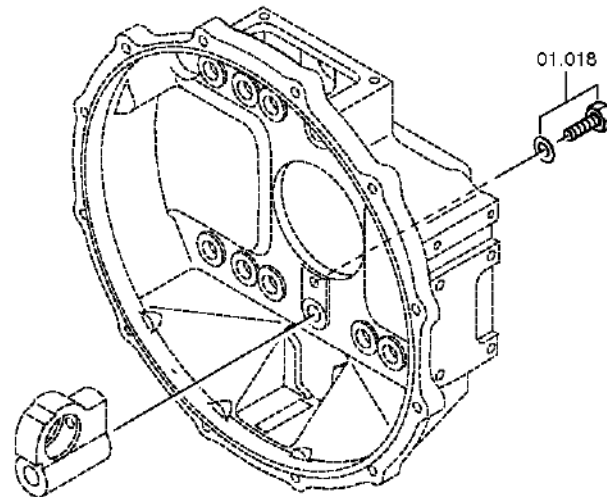


# Plant

Page 3 from 3

Material number: 1350.003.037  
Plant: 061.92.87-1  
CLUTCH HOUSING

6 S 1200 BO /  
ANCHORAGE



# Parts list

Page 1 from 1

Material number: 1350.003.037

6 S 1200 BO /

Plant: 061.92.78-1

Material-assembly-group-no: 6060.101.840



Pos.	Material number	Customer material	Name	Quantity	ME	Amend. no.	Techn. Info.	Weight	Rep kit	Alternative material
10	6060.201.249		BELL HOUSING	1			KPL. IN 6060 201 248(1)	0,000		
18	---		HEXAGON BOLT	1			M12X35	0,000		
---	0636.015.679		HEXAGON BOLT	1			M12X35	0,000		
---	0630.100.284		WASHER	1		Z00007158217		0,000		
20	---		HEXAGON BOLT	9		C01000369B10	M18X1,5X85	0,000		
---	0636.100.547		HEXAGON BOLT	9		Z00007061910	M18X1,5X85	0,000		
---	0630.001.021		WASHER	9				0,000		
22	---		HEXAGON BOLT	1		C01009300A10	M18X1,5X160	0,000		
---	0636.100.552		HEXAGON BOLT	1		Z00007062011	M18X1,5X160	0,000		
---	0630.001.021		WASHER	1				0,000		
30	0501.317.373		COVER	1				0,000		
40	0636.100.621		HEXAGON BOLT	4		Z00009560910	M8X12	0,000		
210	---		PLUG	4			GPN 300*F 19 D=20,7	0,000		
---	0637.510.568		PLUG	4				0,000		
---	---		ADHESIVE	4			LOCTITE NR.325 / LOCTITE NR.326	0,000		
---	0666.690.083		ADHESIVE	4				0,000		
---	0666.690.066		JOINCOMPOUND	4				0,000		
800	0501.006.795	5 6082 0	CLUTCH CYLINDER	1				0,000		
830	0636.100.788		HEXAGON BOLT	4		Z00007891612	M8X14	0,000		
840	6060.201.221	04226911	INTERMPLATE	1				0,000		
842	0636.100.796		HEXAGON BOLT	4		Z00007891111	M8X20	0,000		

# Plant

Page 1 from 1

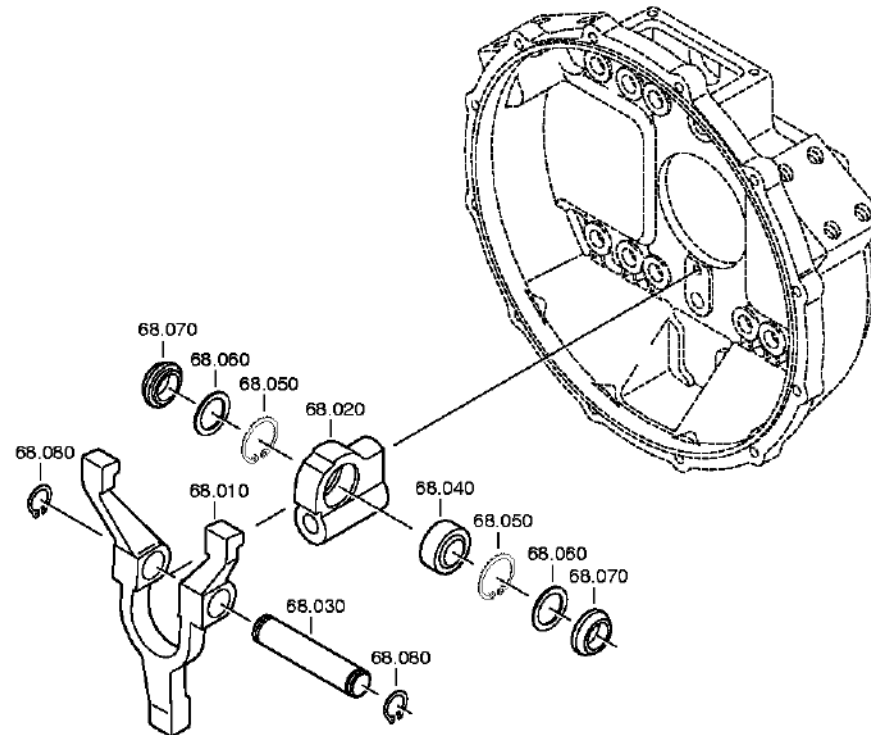
Material number: 1350.003.037

Plant: 061.93.30-1

Material-assembly-group-no: 6060.168.001

6 S 1200 BO /

CLUTCH RELEASE DEVICE



# Parts list

Page 1 from 1

Material number: 1350.003.037

6 S 1200 BO /

Plant: 061.93.30-1

Material-assembly-group-no: 6060.168.001



Pos.	Material number	Customer material	Name	Quantity	ME	Amend. no.	Techn. Info.	Weight	Rep kit	Alternative material
10	6060.206.006	04226929	RELEASE FORK	1			KPL.	0,000		
20	6060.306.096	04226930	BRACKET	1		C01008310A10		0,000		
30	6060.306.086	04226931	PIN	1			ENTHALT.IN 0731 201 607(2)	0,000		
40	0635.285.060		JOINT BEARING	1		C01009510B10		0,000		
50	0630.502.023		RETAINING RING	2			42X1,75	0,010		
60	0501.315.198	04226935	SEALING RING	2				0,000		
70	6060.306.087	5 6099 0	SEALING WASHER	2				0,000		
80	0630.501.020	ZM 7094920	RETAINING RING	2			25X1,2	1,800		