



Spare Parts Catalog

6 S 700 BO

COMESA-MAZ

Material number: 1351.001.029

Current date: 12.08.2013

ZF Friedrichshafen AG
Hauptverwaltung
80038 Friedrichshafen
Deutschland

Telefon: +49 7541 77-0

Telefax: +49 7541 77-908000

www.zf.com

zuständiges Werk:
Friedrichshafen

Notes relating to the spare parts catalog

Setup of the spare parts catalog

- Cover sheet
- Technical Cover (only in SDM print)
- Overview of figures
- Figure
- Associated parts list
- Next figure
- Associated parts list
- ...

Figure and parts list



Overview of figures

Bildtafel Figure	Sachnummer Product number	Benennung (Description)	Technische Info Technical info	Description (Benennung)	Menge Quantity	Einheit Unit
068.08.17	1316.170.001	AUSLEGER	WL	SHIFT TURRET	1	Stk
068.08.06	1316.170.031	DECKEL	WL*H-H *VM	COVER	1	Stk
068.08.14	1316.170.808	DECKEL	WL*AUSL+GEH*H-H*HF160N	COVER	1	Stk
08	1316.170.441	ANSCHLUSSTEILE	WL*NG-VORB*RG-SCHL*168N *BAJONETT	CONNECTING PARTS	1	Stk

The "gap" indicates that there is no separate graphics panel (poster) for this assembly
The parts of this assembly are shown with the same mid-section number on the figure

1 Positions and subpositions

Pos.	Sachnummer Product number	Benennung (Description)	Technische Info Technical info	Description (Benennung)	Menge Quantity	Einheit Unit
0370	1315.201.054	RUECKLAUFBOLZEN	KPL.16S151*SG*L= 79	REV.IDLER SHAFT	1	Stk
/0120	0631.329.293	SPANNSTIFT		SLOT. PIN	1	Stk

Positions marked with "/" are the individual items of a completion
For example: Position 0370 contains a centering pin with the position /0120

2 Combinations with standardized parts

Pos.	Sachnummer Product number	Benennung (Description)	Technische Info Technical info	Description (Benennung)	Menge Quantity	Einheit Unit
0630		VERSCHL.SCHR.		SCREW PLUG	1	Stk
	0636.302.067	VERSCHL.SCHR.		SCREW PLUG	1	Stk
	0634.801.249	DICHTRING	A 26 X 31	SEALING RING	1	Stk

The parts list shows the components included in the combination of standardized parts

3 Depiction of position/item number on the figure and in the parts list

01.620 - on the figure 01 relates to the assembly in which the position is included. Due to program-related reasons, it is shown on the figure.

0620 - in the parts list

Pos.	Sachnummer Product number	Benennung (Description)	Technische Info Technical info	Description (Benennung)	Menge Quantity	Einheit Unit
0620	0732.040.736	DRUCKFEDER		COMPRESSION SPRING	1	Stk

4 *-Positions

Positions marked with an * are optional i.e. inclusion in the parts list is not mandatory.
The following note is shown on the figure

je nach Stücklistenausführung
depending on spec. number
*
suivant la nomenclature
secondo la distinta base

5 Parts, dotted display

Parts with dotted display on the figure are only used for orientation of other parts



Pos.	Information	Amendment number
001	Use case -----	
002	Customer OAO - MINSKER AUTOMOBILWERK - (MAZ)	
003	City Minsk	
004	DUNS 53-515-8505	
006	Sales Name MAZ-206	
007	Manufacturer OAO - MINSKER AUTOMOBILWERK - (MAZ)	
008	Engineering Name	
009	Product Use BUS	
011	SOP	
012	Engine	
013	Sales Designation OM904LA E3	
014	Manufacturer Daimler	
015	Drivetrain type DIESEL	
016	Eng.Displ. 4249 cm3	
017	Cylinder 4	
018	Nom. power 130 kW	
019	RPM at nom. power 2300 1/min	
020	Nom. torque 674 Nm	
021	RPM at nom. torque 1200 1/min	
023	Aenderung MOTSTAMM 802871 Text-document 000000382069	
024	Classification use case -----	
025	APPROVAL NOTE 1 ERSTEINBAU*UEBERPRUEFUNG ERFORDERLICH	
029	DESIGNATION, CLUTCH MF395	
030	MANUFACTURER, CLUTCH ZF-SACHS	
035	DYNAMIC TYRE RADIUS 420 mm	
036	REAR AXLE RATIO 4.6	
040	PERMISS.GROSS VEHICLE WEIGHT 12 t	
046	Product description -----	
047	INSTALLATION POS TRANSMISSION HORIZONTAL LEFT	
048	TRANSMISSION ATTACHMENT FLANGE-MOUNTED	
050	RATIO, BOTTOM GEAR 6.72	
051	RATIO, TOP GEAR .79	
052	SET OF RATIOS SG	



Pos.	Information	Amendment number
053	RATIO, 1ST GEAR 6.72	
054	RATIO, 2ND GEAR 3.68	
055	RATIO, 3RD GEAR 2.15	
056	RATIO, 4TH GEAR 1.41	
057	RATIO, 5TH GEAR 1	
058	RATIO, 6TH GEAR .79	
059	RATIO, 1ST GEAR REVERSE 6.03	
060	DESIGN, SHIFT SYSTEM TURNING SHAFT	
061	POSITION, GEAR SHIFT SYSTEM HORIZONTAL RIGHT	
062	DESIGN, SEPARATING CLUTCH FULL-SYNCHRONIZED	
063	REFERENCE LENGTH INPUT SHAFT 100.7 mm	
064	STANDARD TYPE INPUT SHAFT SAE	
065	NUMBER OF WEDGES INPUT SHAFT 10	
066	VERSION OF INPUT SHAFT FORM C	
067	NOMINAL DIAMETER INPUT SHAFT 1.75 in	
068	DIAMETER, JOURNAL, INPUT SHAFT 25 mm	
069	TYPE FIT SPIGOTS INPUT SHAFT F7	
070	DIAMETER SHAFT OF INPUT SHAFT 44 mm	
071	BUSH VARIANT INPUT SHAFT WITHOUT GROOVE	
073	DIAMETER, RELEASE FLANGE 57 mm	
074	TYPE FIT RELEASE BEARING FLA. E8	
075	DESIGN BEARING OUTPUT STANDARD SUSPENSION	
077	OUTER DIA. OUTPUT FLANGE RA 150 mm	
080	NO.OF BORES OUTPUT FLANGE HA1 4	
082	BORE DIA. OUTPUT FLANGE RA 13 mm	
086	REF. LENGTH OUTPUT FLANGE RA 520.5 mm	
095	DIMENSION SHIFT TURRET DIST. 214 mm	
096	MEAS. LOC. SHIFT TURRET DIST. SHIFT LEVER OUTSIDE EDGE	
097	TYPE OF SHIFT CONTROL CONTROL CABLE	
098	RADIUS 1 SHIFT LEVER 75 mm	
099	DESIGN, OFFSET, SHIFT LEVER OUTSIDE	
102	LEVER POSITION SHIFTING OUTPUT A	
107	SPRING ARRANGEMENT Q7	



Pos.	Information	Amendment number
108	SPRING FORCE DETENT PLUNGER RG 240 N	
111	SELECTION PATTERN VARIANT GEAR SHIFT PATTERN 1	
112	SWITCH, REVERSE GEAR y	
113	DESIGN, RG (REV.GEAR) SWITCH OPENING SWITCH	
114	NOTE ON SWITCH, REVERSE GEAR GEAR SHIFT RAIL	
115	PROT.CAP SWITCH, REVERSE GEAR y	
116	DESIGN, CONNECTION, RG SWITCH DIN BAYONET	
118	SWITCH, NEUTRAL GEAR y	
119	DESIGN,NG(NEUTRAL GEAR)SWITCH OPENING SWITCH	
120	PROT.CAP SWITCH, NEUTRAL GEAR y	
121	DESIGN, CONNECTION, NG SWITCH DIN BAYONET	
122	REF.LENGTH,RELEASE BEAR.FLAN 136 mm	
127	DESIGN,CONN., CLUTCH HOUSING SAE 2	
129	VERSION OF CLUTCH HOUSING INTEGRATED	
130	TYPE OF RELEASE MECHANISM WITH	
131	VERSION OF CLUTCH CYLINDER SERVO	
133	DESIGN ACTUATION COUPLING D=75.0	
135	INSTALL. DIM. CLUTCH HOUSING 112 mm	
136	ASSEMBLY POS. CLUTCH CYLINDER 6	
143	DESIGN RELEASE BEARING WITHOUT GROOVE	
144	WRENCH SIZE, RELEASE FORK 75 mm	
148	NO.OF PULSES PULSE SENSOR SFI H68 6 IMP/U	
151	DESIGN PULSE SENSOR SFI H68 WITH	
154	PROT.CAP PULSE SENSOR SFI H68 y	
156	DESIGN CONN.PULSE SENSOR SFI H68 DIN BAYONET	
160	OIL CAPACITY, GEARBOX 7.5 dm3	
162	OIL GRADE PERMISSIBLE ACC. TO TE-ML02	
164	COLOR JET BLACK	
165	COLOUR CLASSIFICATION ACC. TO RAL 9005	
166	PAINTING, ZF STANDARD 915 W	
167	CODING OUTER CONSERVATION KA1	
168	SCOPE OUTER CONSERVATION T	
169	CODING INNER CONSERVATION KI1	



Pos.	Information	Amendment number
170	CODIERUNG STOPFENANZAHL	
171	CONSERVATION SPECIFICATION ZFN 916	
174	Documents -----	
175	SCHALTGETRIEBE Drawing 1290.055.700	
176	Drawing 1290.700.087	
177	6-GANG-GETRIEBE Drawing 1351.601.002	
178	1290.031.001 Drawing 1290.031.001	

Assembly group overview

Material number: 1351.001.029

6 S 700 BO / COMESA-MAZ



Page 1 from 1

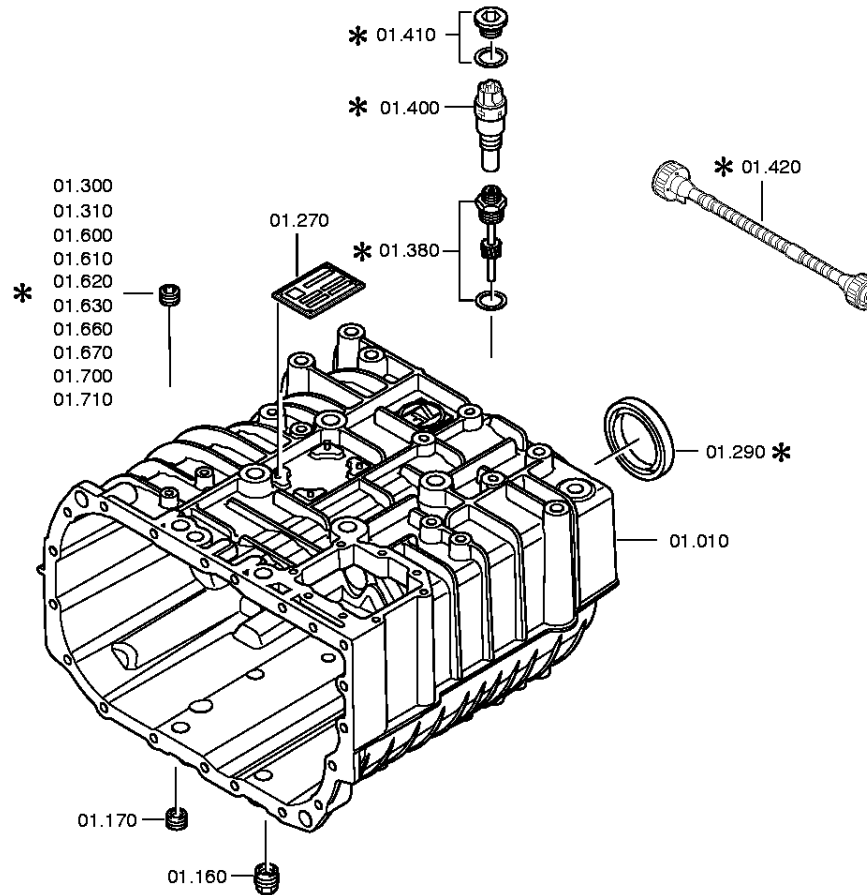
Graphics	Pos.	Material number	Name	Quantity	Amend. no.	Techn. Info.
032.01.05-1	110	1290.101.160	GEARBOX HOUSING	1		
032.01.05-1	120	1290.101.891	GEARBOX HOUSING	1		
032.01.05-1	122	1290.101.466	CONNECTING PARTS	1		
032.01.82-1	912	1290.101.212	CLUTCH HOUSING	1		
032.02.40-1	140	1290.102.530	CONNPLATE	1		
032.02.04-1	150	1290.102.814	INPUT SHAFT	1		
032.02.04-1	920	1290.102.128	INPUT SHAFT	1		
032.03.02-1	170	1290.103.800	LAYSHAFT	1		
032.03.02-1	920	1290.103.068	LAYSHAFT	1		
032.04.86-1	210	1290.104.860	MAIN SHAFT	1		
032.04.06-1	910	1290.104.152	MAIN SHAFT	1		
032.05.01-1	220	1290.105.017	RETURN	1		
032.06.09-1	230	1290.106.059	GEAR SHIFT SYSTEM	1		
032.06.09-1	232	1290.106.824	GEAR SHIFT SYSTEM	1		
032.06.40-1	240	1290.106.406	CONNECTING PARTS	1		
032.07.05-1	270	1290.107.801	GEAR SHIFT HOUSING	1		
032.07.05-1	910	1290.107.381	GEAR SHIFT HOUSING	1		
032.07.05-1	920	1290.107.393	GEAR SHIFT SHAFT	1		
032.07.05-1	930	1290.107.564	CONNECTING PARTS	1		
032.93.31-1	134	1290.168.007	CLUTCH RELEASE DEVICE	1		
032.93.68-1	136	1290.168.402	CLUTCH RELEASE DEVICE	1		

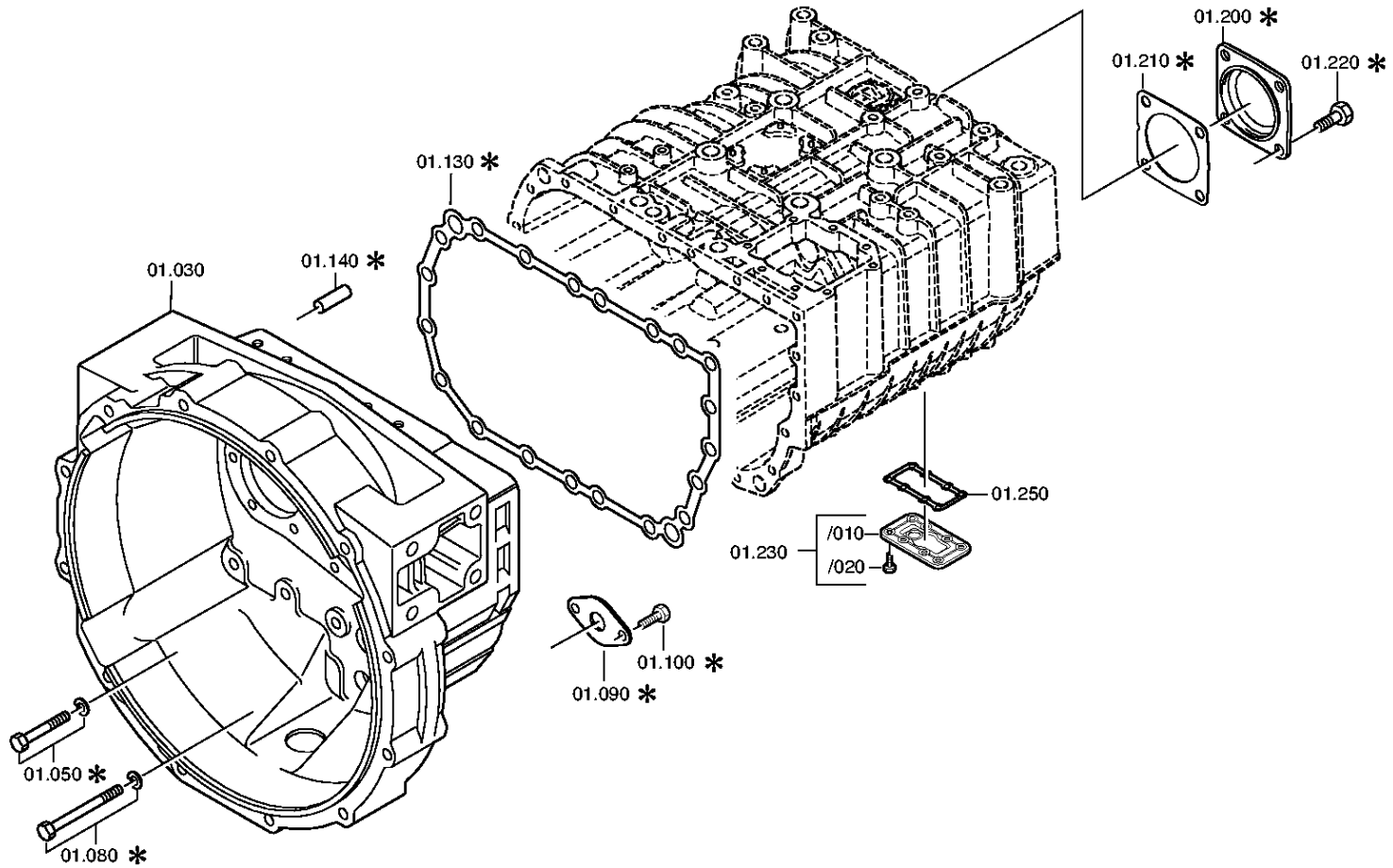
Plant

Page 1 from 2

Material number: 1351.001.029
Plate: 032.01.05-1
GEARBOX HOUSING

6 S 700 BO / COMESA-MAZ
GEARBOX HOUSING





Parts list

Page 1 from 2

Material number: 1351.001.029

6 S 700 BO / COMESA-MAZ

Plate: 032.01.05-1

Material-assembly-group-no: 1290.101.160



Pos.	Material number	Customer material	Name	Quantity	ME	Amend. no.	Techn. Info.	Weight	Rep kit	Alternative material
10	1290.201.256		HOUSING	1		C01008825E10	KPL.6S850	0,000		
30	1290.301.220		CLUTCH HOUSING	1			SAE 2 STANDARD 199.3	0,000		
50	---		HEXAGON BOLT	1		Z00007071114	M10X55	0,000		
---	0636.100.341		HEXAGON BOLT	1		Z00007071113	M10X55	0,000		
---	0630.100.294		WASHER	1		Z00007158111		0,000		
80	---		HEXAGON BOLT	19			M10X95	0,000		
---	0636.024.525		HEXAGON BOLT	19		Z00007054911	M10X95	0,000		
---	0630.100.294		WASHER	19		Z00007158116		0,000		
130	1290.301.146		GASKET	1				0,000		
140	0631.306.230		CYLINDRICAL PIN	2			16X30	0,000		
160	---		SCREW PLUG	1		Z00010176112	M24X1,5	0,000		
---	0736.300.160		SCREW PLUG	1		Z00010176110	M24X1,5 M24X1,5	0,000		
---	0730.008.637		SEALING RING	1		Z00010176110	24X29	0,000		
170	---		SCREW PLUG	1		Z00010112112	60N.M*DICHTRING M24X1,5	0,000		
---	0636.304.088		SCREW PLUG	1		Z00010112110	M24X1,5	0,000		
---	0730.008.637		SEALING RING	1		Z00010112110	24X29	0,000		
200	1328.301.170		COVER	1		Z00008068012		0,000		
210	1238.308.201		GASKET	1			ENTHALT.IN 1238 308 202(2)	0,000		
220	0636.016.406		HEXAGON BOLT	4		Z00007061013	M12X25	0,000		
230	---		COVER	1				0,000		
---	1290.201.069		COVER	1			KPL.	0,000		
/10	1290.301.125		COVER	1			ENTHALT.IN 1290 301 160(1)	0,000		
/20	0636.100.622		HEXAGON BOLT	8			M8X16	0,000		
---	1290.201.068		COVER	1			KPL.	0,000		
/10	1290.301.037		COVER	1			ENTHALT.IN 1290 301 036(1)	0,000		
/20	---		HEXAGON BOLT	8			M8X30	0,000		
250	1290.301.145		GASKET	1				0,000		
270	---		TYPE PLATE	1		C01001056E10		0,000		
---	0730.365.241		TYPE PLATE	1			EINHEITSSCH. VERDREHSICHER	0,000		

Parts list

Page 2 from 2

Material number: 1351.001.029

6 S 700 BO / COMESA-MAZ

Plate: 032.01.05-1

Material-assembly-group-no: 1290.101.160



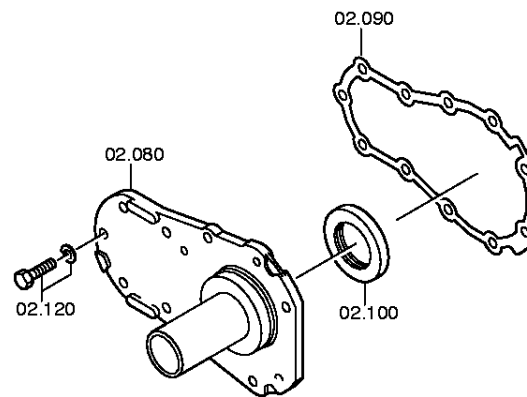
Pos.	Material number	Customer material	Name	Quantity	ME	Amend. no.	Techn. Info.	Weight	Rep kit	Alternative material
---	0730.365.171		TYPE PLATE	1			ZF HUNGARIA	0,000		
---	0730.365.202		TYPE PLATE	1			ZF DRIVETECH CHINA ECOLITE	0,000		
290	---		SHAFT SEAL	1		C01003119F10	60X74X10	0,000		
---	0750.111.469		SHAFT SEAL	1			60X74X10	0,000		
/10	0734.319.410		SHAFT SEAL	1			60X74X10 FA.ELRING	0,000		
/20	0734.319.688		SHAFT SEAL	1			60X74X10 FA.CFW	0,000		
400	0501.210.856		PULSE SENSOR	1				0,000		
620	---		SCREW PLUG	1			35N.M*O.DICHTRING M18X1,5	0,000		
630	---		SCREW PLUG	1			35N.M*O.DICHTRING M18X1,5	0,000		
660	---		SCREW PLUG	1			35N.M*O.DICHTRING M18X1,5	0,000		
670	---		SCREW PLUG	1			35N.M*O.DICHTRING M18X1,5	0,000		
700	---		SCREW PLUG	1			35N.M*O.DICHTRING M18X1,5	0,000		
710	---		SCREW PLUG	1			35N.M*O.DICHTRING M18X1,5	0,000		

Plant

Page 1 from 2

Material number: 1351.001.029
Plate: 032.02.40-1
INPUT SHAFT

6 S 700 BO / COMESA-MAZ
CONNPLATE

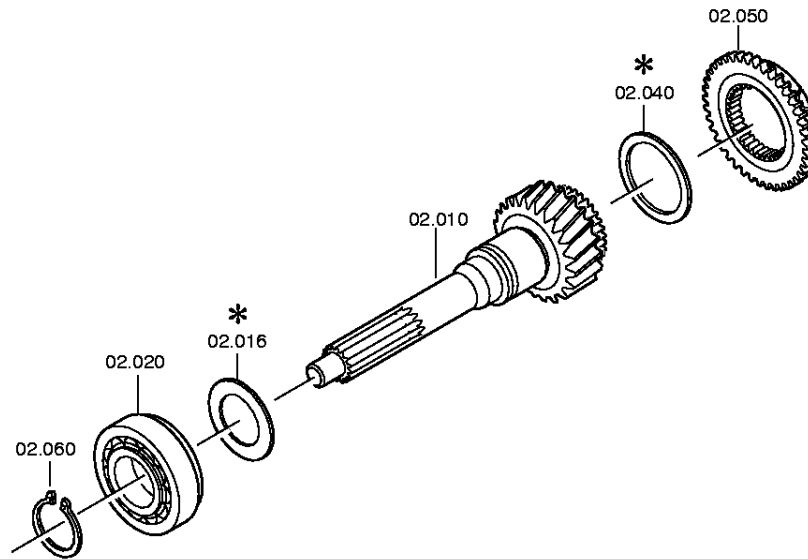


Plant

Page 2 from 2

Material number: 1351.001.029
Plate: 032.02.04-1
INPUT SHAFT

6 S 700 BO / COMESA-MAZ
CONNPLATE



Parts list

Page 1 from 1

Material number: 1351.001.029

6 S 700 BO / COMESA-MAZ

Plate: 032.02.40-1

Material-assembly-group-no: 1290.102.530



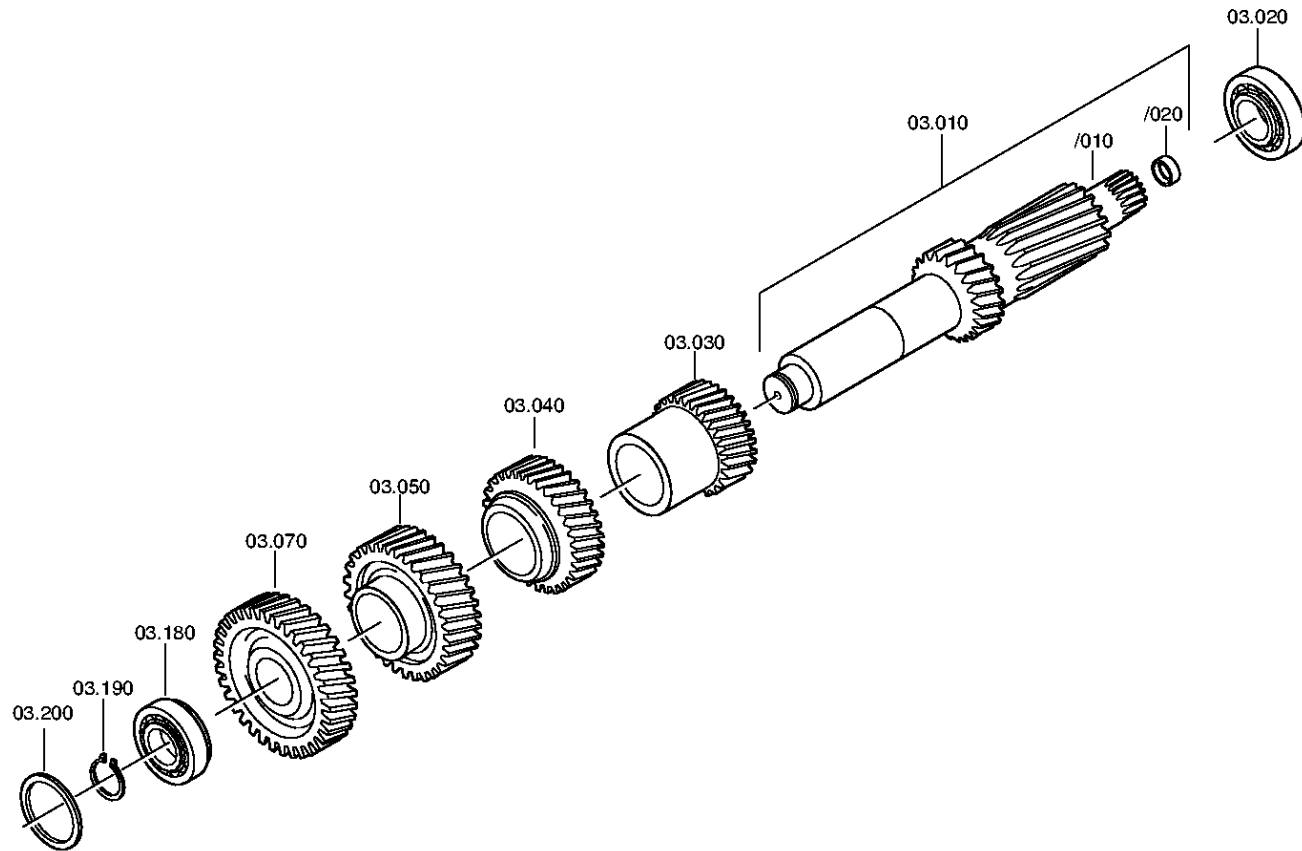
Pos.	Material number	Customer material	Name	Quantity	ME	Amend. no.	Techn. Info.	Weight	Rep kit	Alternative material
10	1290.302.508		INPUT SHAFT	1		C01003881E10		0,000		
20	0735.330.800		BALL BEARING	1		C01003881E10	55,0X116,0X28,0 FA. SKF	0,000		
50	1290.304.482		CLUTCH BODY	1			ENTHALT.IN 1290 302 375(1)	0,000		
60	0630.531.070		RETAINING RING	1		C01003881E10	55X3	0,010		
80	1290.302.437		CONNPLATE	1				0,000		
90	0501.315.106		GASKET	1				0,000		
100	0750.111.149		SHAFT SEAL	1			48X65X10	0,000		
120	0636.016.414		HEXAGON BOLT	11		Z00007059110	M8X28	0,000		

Plant

Page 1 from 1

Material number: 1351.001.029
Plate: 032.03.02-1
LAYSHAFT

6 S 700 BO / COMESA-MAZ
LAYSHAFT



Parts list

Page 1 from 2

Material number: 1351.001.029

6 S 700 BO / COMESA-MAZ

Plate: 032.03.02-1

Material-assembly-group-no: 1290.103.800



Pos.	Material number	Customer material	Name	Quantity	ME	Amend. no.	Techn. Info.	Weight	Rep kit	Alternative material
10	1290.203.039		LAYSHAFT	1			KPL.	0,000		
/10	1290.303.192		LAYSHAFT	1			ENTHALT.IN 1290 303 130(0)	0,000		
/20	1250.303.095		THRUST RING	1				0,000		
20	0735.370.438		TAROLLEBEARING	1		C01000582E10	39,688X76,200X23,812	0,000		
30	1290.303.197		HELICAL GEAR	1			3G/Z22 IN 1290 303 206(1)	0,000		
40	1290.303.198		HELICAL GEAR	1			4G/Z31	0,000		
50	1290.303.199		HELICAL GEAR	1			6G/Z53 IN 1290 303 218(1)	0,000		
70	1290.303.200		HELICAL GEAR	1			KON/Z36 IN 1290 303 207(1)	0,000		
180	0735.371.607		TAROLLEBEARING	1			40,0X80,0X21,0 FA.TIMKEN	0,000		
190	---		RETAINING RING	1			H= 1,30- 1,75(ABSTUFUNG:0,05MM)	0,000		
---	0630.501.031		RETAINING RING	1			40X1,75	4		
---	0630.501.231		RETAINING RING	1			40X1,7	0,000		
---	0630.501.259		RETAINING RING	1			40X1,65	0,000		
---	0630.501.230		RETAINING RING	1			40X1,6	0,000		
---	0630.501.258		RETAINING RING	1			40X1,55	0,000		
---	0630.531.048		RETAINING RING	1			40X1,5	5		
---	0630.501.257		RETAINING RING	1			40X1,45	0,000		
---	0630.501.235		RETAINING RING	1			40X1,4	0,000		
---	0630.501.285		RETAINING RING	1			40X1,35	0,000		
---	0630.501.286		RETAINING RING	1			40X1,3	0,000		
200	---		WASHER	2			H= 1,35- 2,20	0,000		
---	0730.104.302		WASHER	2			A=2,20 IN 0730 104 301(2)	0,020		
---	0730.104.303		WASHER	2			A=2,00 IN 0730 104 301(2)	20		
---	0730.104.304		WASHER	2			A=1,75 IN 0730 104 301(2)	20		

Parts list

Page 2 from 2

Material number: 1351.001.029

6 S 700 BO / COMESA-MAZ

Plate: 032.03.02-1

Material-assembly-group-no: 1290.103.800



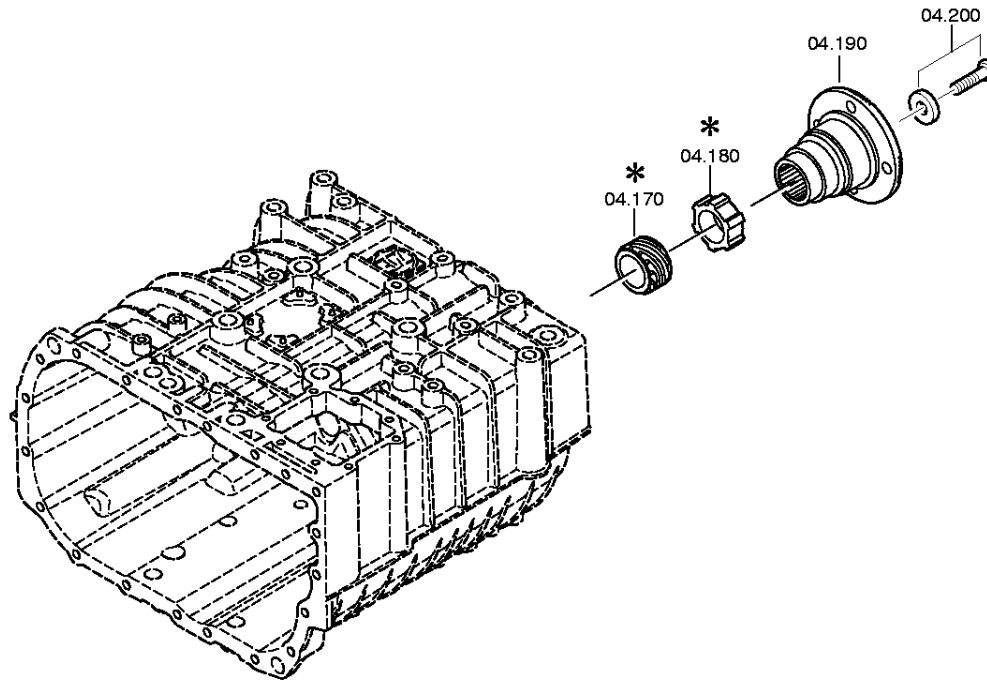
Pos.	Material number	Customer material	Name	Quantity	ME	Amend. no.	Techn. Info.	Weight	Rep kit	Alternative material
---	0730.104.305		WASHER	2			A=1,70 IN 0730 104 301(2)	0,000		
---	0730.104.306		WASHER	2			A=1,65 IN 0730 104 301(2)	0,000		
---	0730.104.307		WASHER	2			A=1,60 IN 0730 104 301(2)	0,000		
---	0730.104.308		WASHER	2			A=1,55 IN 0730 104 301(2)	20		
---	0730.104.309		WASHER	2			A=1,50 IN 0730 104 301(2)	0,000		
---	0730.105.290		WASHER	2			A=1,45 IN 0730 104 301(2)	0,000		
---	0730.105.291		WASHER	2			A=1,40 IN 0730 104 301(2)	0,000		
---	0730.105.292		WASHER	2			A=1,35 IN 0730 104 301(2)	0,000		

Plant

Page 1 from 2

Material number: 1351.001.029
Plate: 032.04.86-1
MAIN SHAFT

6 S 700 BO / COMESA-MAZ
MAIN SHAFT



Plant

Page 2 from 2

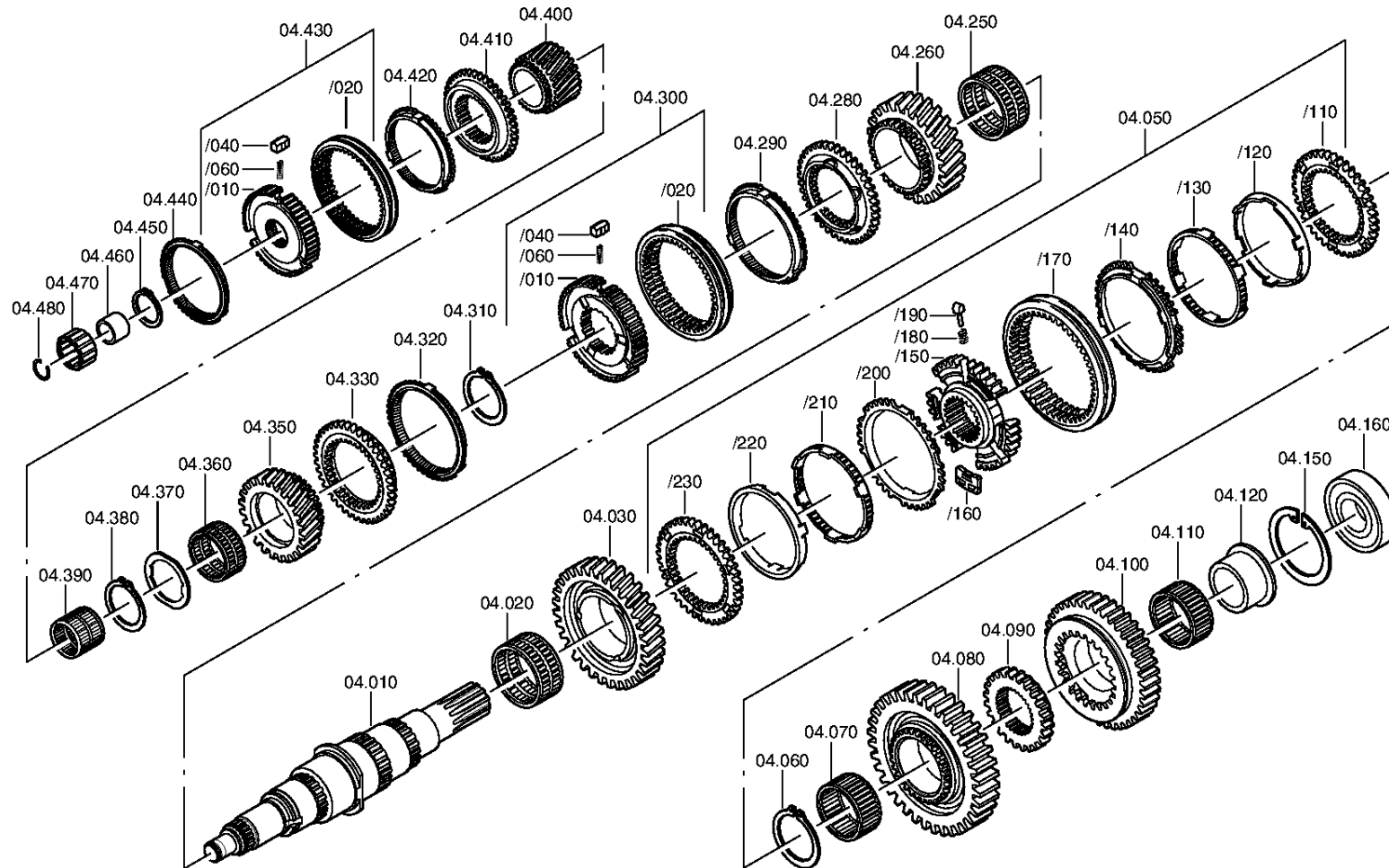
Material number: 1351.001.029

Plate: 032.04.06-1

MAIN SHAFT

6 S 700 BO / COMESA-MAZ

MAIN SHAFT



Parts list

Page 1 from 4

Material number: 1351.001.029

6 S 700 BO / COMESA-MAZ

Plate: 032.04.86-1

Material-assembly-group-no: 1290.104.860



Pos.	Material number	Customer material	Name	Quantity	ME	Amend. no.	Techn. Info.	Weight	Rep kit	Alternative material
10	1290.304.620		MAIN SHAFT	1		C01007152E10		0,000		
20	0735.321.530		NEEDLE CAGE	1		C01003030C10	75,0X83,0X35,0 FA.INA	0,000		
30	1290.304.487		HELICAL GEAR	1			2G IN 1290 304 450(0)	0,000		
50	1290.204.079		SYNCHRONIZER	1		C01003586C10	KPL.ZF-D*D=135/128* 6S850	0,000		
/110	1304.304.623		CLUTCH DISC	1				0,000		
/120	---		INNER RING	1		C01007342D10		0,000		
---	1290.304.579		INNER RING	1			D135/128	0,000		
---	1290.304.350		INNER RING	1			ENTHALT.IN 1290 304 439(1)	0,000		
/130	---		INTERMRING	1		C01008969C10		0,000		
---	1290.304.366		INTERMRING	1			ZF-D135/128 MO-MASS	0,000		
---	6002.306.154		INTERMRING	1			D=135/128	0,000		
/140	1290.304.438		OUTER RING	1			ZF-D135/128	0,000		
/150	1304.304.687		SYNCHROBODY	1			ENTHALT.IN 1304 304 644(0)	0,000		
/160	1312.304.159		COUPLING ELEMENT	3				0,030		
/170	6002.305.994		SLIDING SLEEVE	1		C01007317F10		0,000		
/180	0732.040.409		COMPRSPRING	3		C01006334C10		0,002		
/190	1297.304.436		PRESSURE PIECE	3				0,004		
/200	1290.304.438		OUTER RING	1			ZF-D135/128	0,000		
/210	1290.304.366		INTERMRING	1			ZF-D135/128 MO-MASS	0,000		
/220	---		INNER RING	1		C01007342D10		0,000		
---	1290.304.579		INNER RING	1			D135/128	0,000		
---	1290.304.350		INNER RING	1			ENTHALT.IN 1290 304 439(1)	0,000		
/230	1304.304.623		CLUTCH DISC	1				0,000		
60	---		RETAINING RING	1		C01003030C10	H= 3,80- 4,00(ABSTUFUNG:0,05MM)	0,000		
---	0730.501.708		RETAINING RING	1			A=4,00	0,000		
---	0730.501.707		RETAINING RING	1			A=3,95	0,000		
---	0730.501.706		RETAINING RING	1			A=3,90	0,000		
---	0730.501.705		RETAINING RING	1			A=3,85	0,000		
---	0730.501.704		RETAINING RING	1			A=3,80	0,000		

Parts list

Page 2 from 4

Material number: 1351.001.029

6 S 700 BO / COMESA-MAZ

Plate: 032.04.86-1

Material-assembly-group-no: 1290.104.860



Pos.	Material number	Customer material	Name	Quantity	ME	Amend. no.	Techn. Info.	Weight	Rep kit	Alternative material
70	0735.321.531		NEEDLE CAGE	1		C01003030C10	68,0X76,0X35,0 FA.INA	0,000		
80	1290.304.572		SPUR GEAR	1		C01000811C10	1G	0,000		
90	1290.304.573		CLUTCH BODY	1		C01000811C10		0,000		
100	1290.304.058		SPUR GEAR	1			RG/Z35 IN 1290 304 057(1)	0,000		
110	0735.321.531		NEEDLE CAGE	1		C01003321C10	68,0X76,0X35,0 FA.INA	0,000		
120	1290.304.056		THRUST BUSH	1				0,000		
150	---		RETAINING RING	1			H= 2,60- 3,00(ABSTUFUNG:0,10MM)	0,000		
---	0630.502.044		RETAINING RING	1			100X3	44		
---	0630.502.152		RETAINING RING	1			100X2,9	0,000		
---	0630.502.151		RETAINING RING	1			100X2,8	0,000		
---	0630.502.150		RETAINING RING	1			100X2,7	0,000		
---	0630.502.172		RETAINING RING	1			100X2,6	0,000		
160	0750.116.373		BALL BEARING	1		C01002776B10	45,0X100,0X25,0	0,000		
180	1290.304.588		PULSE DISC	1		C01008885C10	E-SPEEDO	0,000		
190	1290.304.595		OUTPUT FLANGE	1		C01009112C10		0,000		
200	---		HEXAGON BOLT	1		C01009112C10	M14X1,5X75	0,000		
---	0636.100.541		HEXAGON BOLT	1		Z00007284711	M14X1,5X75	0,000		
---	0730.112.181		WASHER	1				0,000		
250	0735.321.529		NEEDLE CAGE	1		C01003030C10	75,0X83,0X40,0 FA.INA	0,000		
260	1290.304.581		HELICAL GEAR	1		C01000811C10	3G	0,000		
280	1290.304.509		CLUTCH BODY	1			ENTHALT.IN 1290 304 483(1)	0,000		
290	1317.304.114		SYNCHRO RING	1			ZF-B115III	0,000		
300	1290.204.091		SYNCHRONIZER	1		C01007152E10	KPL.3+4G*B-115 III 1GRAD	0,000		
/10	1290.304.619		SYNCHROBODY	1			ZF-B115 III	0,000		
/20	---		SLIDING SLEEVE	1		Z00008410910		0,000		
---	1317.304.157		SLIDING SLEEVE	1				0,000		
---	1317.304.125		SLIDING SLEEVE	1				0,000		
/40	1317.304.081		PRESSURE PIECE	3				0,000		
/60	0732.042.510		COMPRSPRING	3				0,000		

Parts list

Page 3 from 4

Material number: 1351.001.029

6 S 700 BO / COMESA-MAZ

Plate: 032.04.86-1

Material-assembly-group-no: 1290.104.860



Pos.	Material number	Customer material	Name	Quantity	ME	Amend. no.	Techn. Info.	Weight	Rep kit	Alternative material
310	---		RETAINING RING	1		C01007152E10	H= 2,90- 3,20(ABSTUFUNG:0,10MM)	0,000		
---	0730.501.841		RETAINING RING	1			A=3,20	0,000		
---	0730.501.840		RETAINING RING	1			A=3,10	0,000		
---	0730.501.839		RETAINING RING	1			A=3,00	0,000		
---	0730.501.838		RETAINING RING	1			A=2,90	0,000		
320	1317.304.114		SYNCHORING	1			ZF-B115III	0,000		
330	1290.304.508		CLUTCH BODY	1			ENTHALT.IN 1290 304 483(1)	0,000		
350	1290.304.574		HELICAL GEAR	1		C01000811C10	4G	0,000		
360	0735.321.528		NEEDLE CAGE	1		C01003030C10	60,0X68,0X30,0 FA.INA	0,060		
370	0730.112.265		WASHER	1		C01000811C10	A=7,00	0,000		
380	0730.513.862		RETAINING RING	1		C01003960B10		0,000		
390	0735.321.527		NEEDLE CAGE	1		C01003030C10	44,0X50,0X45,0 FA.INA	0,000		
400	1290.304.547		HELICAL GEAR	1		C01002536B10	6G	0,000		
410	1290.304.482		CLUTCH BODY	1		C01007702B10	ENTHALT.IN 1290 302 375(1)	0,000		
420	1317.304.150		SYNCHORING	1				0,000		
430	1290.204.087		SYNCHRONIZER	1		C01007137D10	KPL.5+6G*B-100 III	0,000		
/10	1290.304.586		SYNCHROBODY	1			ZF-B100III	0,000		
/20	---		SLIDING SLEEVE	1				0,000		
---	1317.304.158		SLIDING SLEEVE	1				0,000		
---	1317.304.126		SLIDING SLEEVE	1				0,000		
/40	1317.304.081		PRESSURE PIECE	3				0,000		
/60	0732.042.510		COMPRSPRING	3				0,000		
440	1317.304.150		SYNCHORING	1				0,000		
450	---		RETAINING RING	1			H= 2,20- 2,50	0,000		
---	0630.531.050		RETAINING RING	1			40X2,5	0,010		
---	0630.501.287		RETAINING RING	1			40X2,45	0,000		
---	0630.531.314		RETAINING RING	1			40X2,4	0,000		
---	0730.501.274		RETAINING RING	1			A=2,35 IN 0730 501 271(2)	0,000		
---	0630.531.315		RETAINING RING	1			40X2,3	0,000		
---	0630.531.316		RETAINING RING	1			40X2,2	0,000		

Parts list

Page 4 from 4

Material number: 1351.001.029

6 S 700 BO / COMESA-MAZ

Plate: 032.04.86-1

Material-assembly-group-no: 1290.104.860



Pos.	Material number	Customer material	Name	Quantity	ME	Amend. no.	Techn. Info.	Weight	Rep kit	Alternative material
460	0735.295.119		INNER RING	1			25,0X31,0X26,0 FA.TORRINGT	0,000		
470	0735.358.128		ROLLER CAGE	1			31,000X46,000X27,200	0,000		
480	0630.513.070		SNAP RING	1				0,001		

Plant

Page 1 from 1

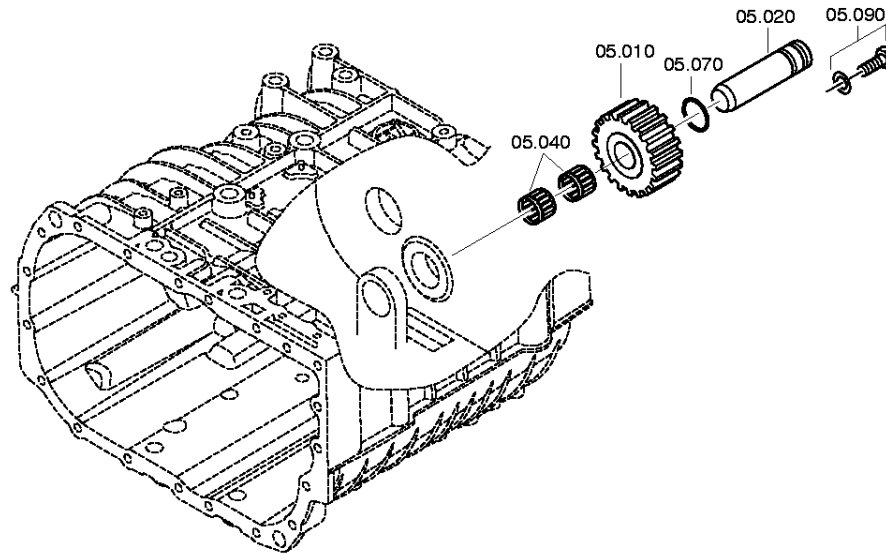
Material number: 1351.001.029

Plate: 032.05.01-1

Material-assembly-group-no: 1290.105.017

6 S 700 BO / COMESA-MAZ

RETURN



Parts list

Page 1 from 1

Material number: 1351.001.029

6 S 700 BO / COMESA-MAZ

Plate: 032.05.01-1

Material-assembly-group-no: 1290.105.017



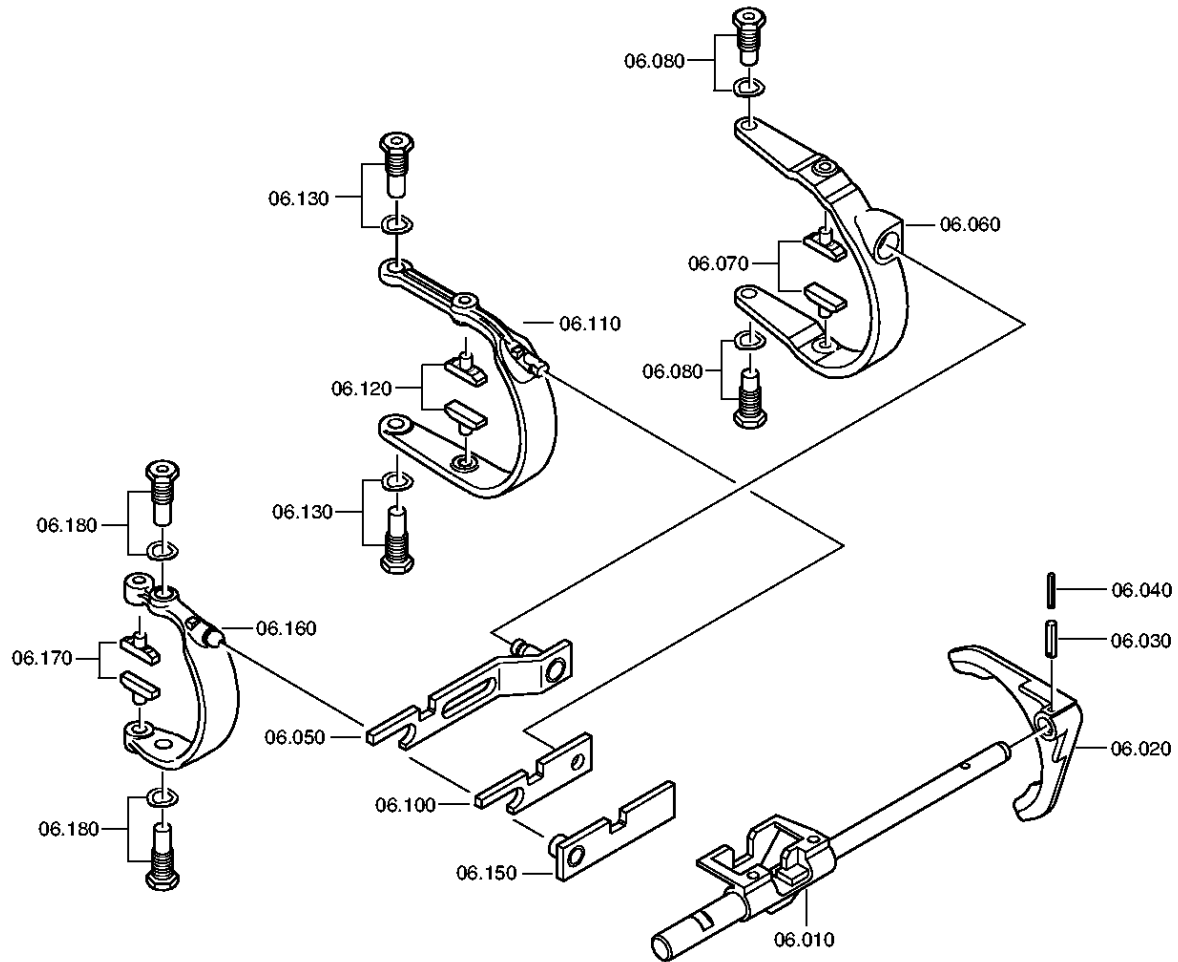
Pos.	Material number	Customer material	Name	Quantity	ME	Amend. no.	Techn. Info.	Weight	Rep kit	Alternative material
10	1290.305.034		REVERSE IDLER GEAR	1			ENTHALT.IN 1290 305 017(1)	0,000		
20	---		REVERSE IDLER SHAFT	1				0,000		
---	1290.305.022		REVERSE IDLER SHAFT	1				0,000		
---	1290.305.028		REVERSE IDLER SHAFT	1				0,000		
40	0635.300.110		NEEDLE CAGE	2			28X35X18	0,000		
70	0634.313.234		O-RING	1			23X3	0,000		
90	---		HEXAGON BOLT	1			M8X16	0,000		
---	0636.100.622		HEXAGON BOLT	1			M8X16	0,000		
---	0630.100.263		WASHER	1		Z00007164810		0,000		

Plant

Page 1 from 2

Material number: 1351.001.029
Plate: 032.06.09-1
GEAR SHIFT SYSTEM

6 S 700 BO / COMESA-MAZ
GEAR SHIFT SYSTEM

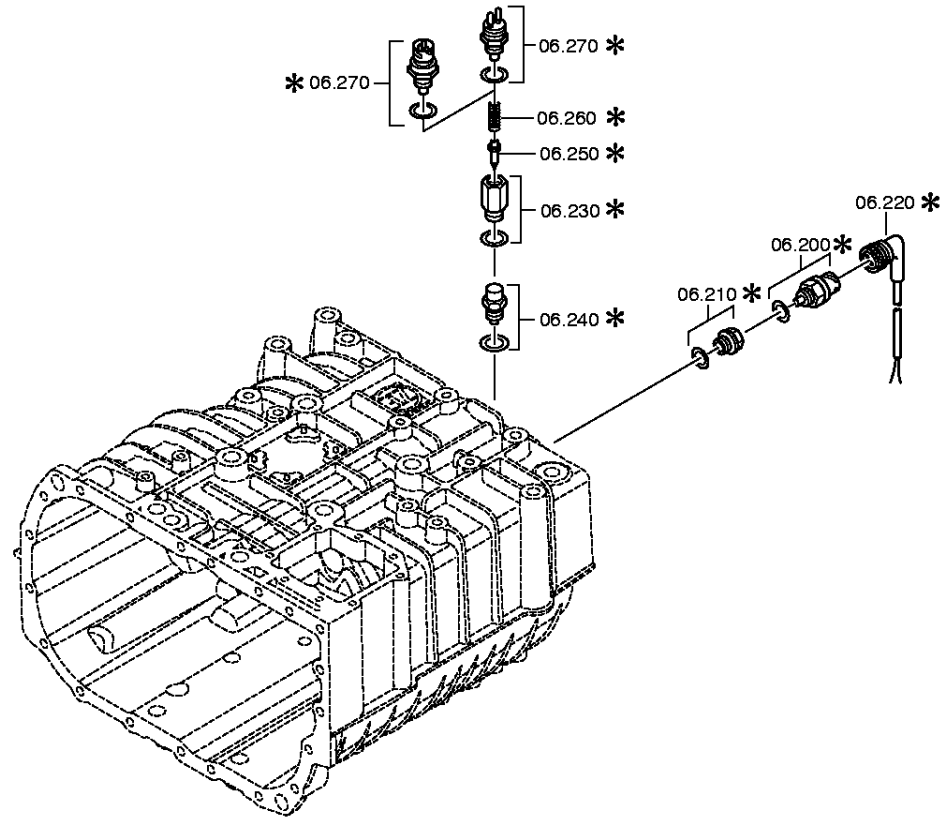


Plant

Page 2 from 2

Material number: 1351.001.029
Plate: 032.06.40-1
GEAR SHIFT SYSTEM

6 S 700 BO / COMESA-MAZ
GEAR SHIFT SYSTEM



Parts list

Page 1 from 2

Material number: 1351.001.029

6 S 700 BO / COMESA-MAZ

Plate: 032.06.09-1

Material-assembly-group-no: 1290.106.059



Pos.	Material number	Customer material	Name	Quantity	ME	Amend. no.	Techn. Info.	Weight	Rep kit	Alternative material
10	1290.206.164		GEAR SHIFT RAIL	1			KPL	0,000		
20	---		GEAR SHIFT FORK	1				0,000		
---	1290.306.295		GEAR SHIFT FORK	1			RG	0,000		
---	1290.306.078		GEAR SHIFT FORK	1			RG	0,000		
30	0631.329.068		SLOTPIN	1			6X28	3,300		
40	0631.329.027		SLOTPIN	1			3,5X28	0,000		
50	1290.206.156		DRAG LINK	1			KPL.1/2G	0,000		
60	1290.306.494		GEAR SHIFT FORK	1			1/2G	0,000		
70	1290.306.439		SLIDING PAD	2				0,000		
80	---		ARTICULATION BOLT	2			O.INDUKT-HAERTUNG M18X1,5	0,000		
---	1290.306.538		ARTICULATION BOLT	2			M18X1,5 IN 1290 306 206(1)	0,000		
---	---		SPRING WASHER	2				0,000		
100	1290.306.529		DRAG LINK	1			3/4G	0,000		
110	1290.306.550		GEAR SHIFT FORK	1			3/4G	0,000		
120	1290.306.423		SLIDING PAD	2			ENTHALT.IN 1290 306 422(2)	0,000		
130	---		ARTICULATION BOLT	2			O.INDUKT-HAERTUNG M18X1,5	0,000		
---	1290.306.537		ARTICULATION BOLT	2			M18X1,5 IN 1290 306 206(1)	0,000		
---	---		SPRING WASHER	2				0,000		
150	1290.206.157		DRAG LINK	1			KPL.5/6G	0,000		
160	1290.306.553		GEAR SHIFT FORK	1		C01002647F10	5/6G	0,000		
170	1290.306.423		SLIDING PAD	2			ENTHALT.IN 1290 306 422(2)	0,000		
180	---		ARTICULATION BOLT	2			O.INDUKT-HAERTUNG M18X1,5	0,000		
---	1290.306.537		ARTICULATION BOLT	2			M18X1,5 IN 1290 306 206(1)	0,000		
---	---		SPRING WASHER	2				0,000		
200	---		SWITCH	1			OEFF*45N.M*SCHEIBE* BAJONETT	0,000		

Parts list

Page 2 from 2

Material number: 1351.001.029

6 S 700 BO / COMESA-MAZ

Plate: 032.06.09-1

Material-assembly-group-no: 1290.106.059



Pos.	Material number	Customer material	Name	Quantity	ME	Amend. no.	Techn. Info.	Weight	Rep kit	Alternative material
---	0501.219.856		SWITCH	1			OEFFNER DIN BAJONETT	0,000		
---	0730.002.064		WASHER	1			A=2,00 IN 0730 003 298(2)	4		
240	---		DETENT PLUNGER	1			120N*65N.M*90GRAD	0,000		
---	1324.207.015		DETENT PLUNGER	1		Z00009029610	KPL. 120 N	0,000		
---	0630.000.072		SHIM RING	1			16X22X1	0,010		

Plant

Page 1 from 1

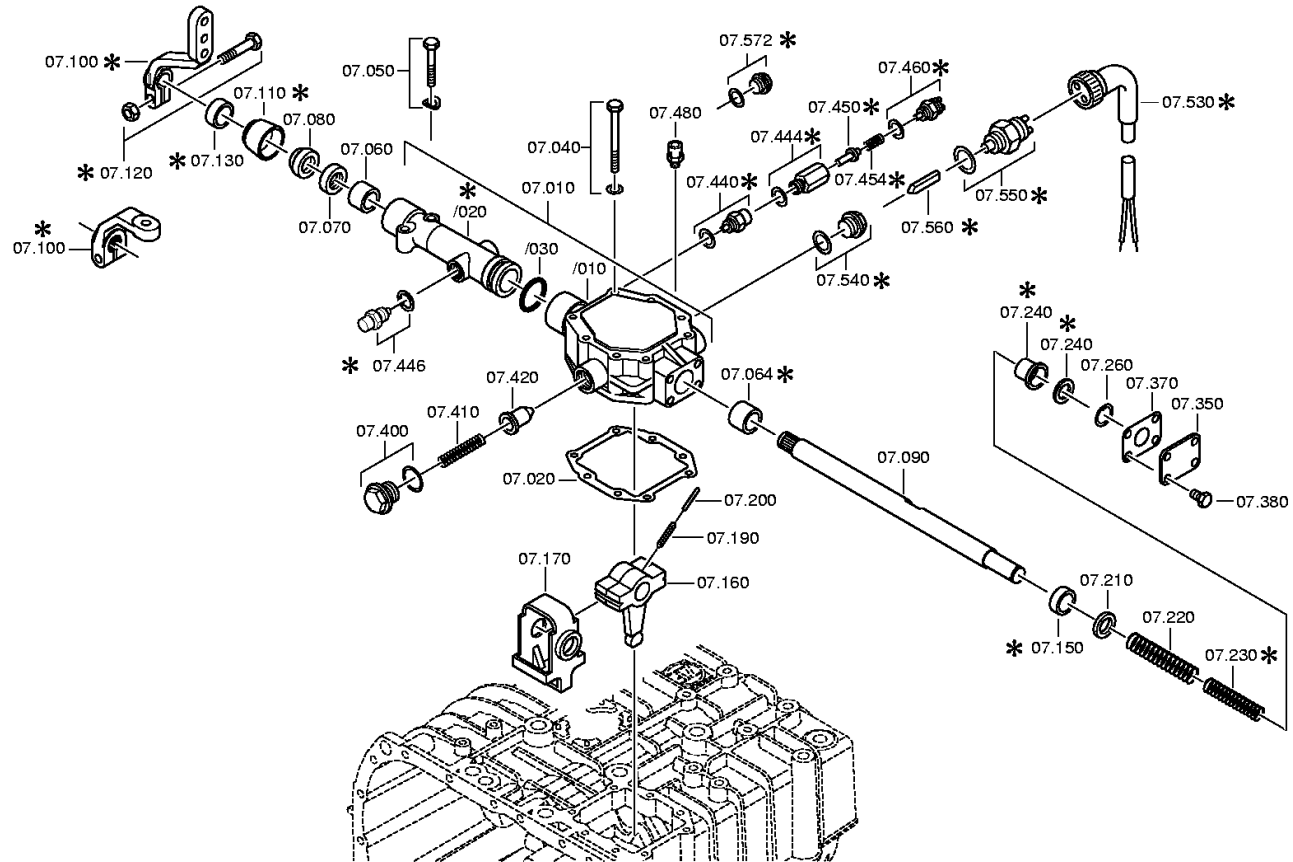
Material number: 1351.001.029
Plate: 032.07.05-1
GEAR SHIFT HOUSING

6 S 700 BO / COMESA-MAZ
GEAR SHIFT HOUSING



Bildtafel:
Figure: 032.07.05
Figure:
Figura:

je nach Stückistenausführung
depending on spec number
*
suivant la nomenclature
secondo la distinta base



Parts list

Page 1 from 2

Material number: 1351.001.029

6 S 700 BO / COMESA-MAZ

Plate: 032.07.05-1

Material-assembly-group-no: 1290.107.801



Pos.	Material number	Customer material	Name	Quantity	ME	Amend. no.	Techn. Info.	Weight	Rep kit	Alternative material
10	1290.206.160		GEAR SHIFT HOUSING	1			KPL.6S850*RL*1 RIEGEL	0,000		
20	1290.306.339		GASKET	1			ENTHALT.IN 1290 306 340(2)	0,000		
40	---		HEXAGON BOLT	8		Z00007170411	M8X70	0,000		
50	---		HEXAGON BOLT	2			M8X50/M8X50Z3	0,000		
---	---		HEXAGON BOLT	2			M8X50	0,000		
---	0636.016.404		HEXAGON BOLT	2		Z00007058711	M8X50	0,000		
---	---		SPRING WASHER	2		Z00018433711		0,000		
---	0630.100.251		SPRING WASHER	2		Z00018433710		0,000		
---	0630.100.458		SPRING WASHER	2		Z00018433710		0,000		
60	0730.260.330		BEARING BUSH	1			A=20,00 IN 0730 260 546(2)	0,000		
64	0730.260.330		BEARING BUSH	1			A=20,00 IN 0730 260 546(2)	0,000		
70	0634.300.302		SHAFT SEAL	1			25X35X7	0,000		
80	0634.307.367		SCRAPER	1				0,009		
90	1290.306.462		GEAR SHIFT SHAFT	1			ENTHALT.IN 1290 306 184(1)	0,000		
100	1295.307.543		GEAR SHIFT LEVER	1			U249 IN 1295 307 548(0)	0,000		
110	1324.307.268		PROTECTION CAP	1		Z00009174311		0,000		
120	---		BOLT+NUT	1		Z00007891718	M10X40	0,000		
---	0636.100.789		HEXAGON BOLT	1		Z00007891711	M10X40	0,000		
---	0637.100.419		HEXAGON NUT	1		Z00007892710	M10	0,000		
160	1290.306.542		GSHIFT FINGER	1				0,000		
170	1290.306.551		LOCKING PIECE	1		C01008843E10		0,000		
190	0631.329.085		SLOTPIN	2			8X36	0,010		
200	0631.329.056		SLOTPIN	2			5X36	0,003		
210	0730.003.285		WASHER	1			A=2,00	0,000		
220	0732.040.504		COMPRSPRING	1				0,000		
240	1290.306.097		SLEEVE	1				0,000		
260	0630.531.201		V-RING	1				0,000		
350	1290.306.098		COVER	1				0,000		
370	1290.306.371		GASKET	1			ENTHALT.IN 1290 306 370(2)	0,000		

Parts list

Page 2 from 2

Material number: 1351.001.029

6 S 700 BO / COMESA-MAZ

Plate: 032.07.05-1

Material-assembly-group-no: 1290.107.801



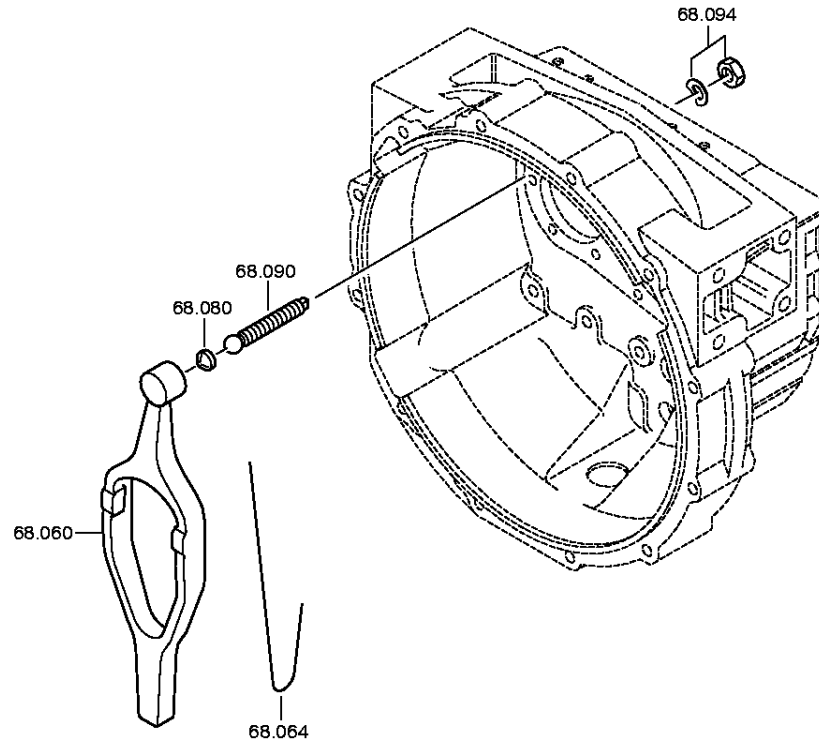
Pos.	Material number	Customer material	Name	Quantity	ME	Amend. no.	Techn. Info.	Weight	Rep kit	Alternative material
380	0636.100.796		HEXAGON BOLT	4		Z00007891113	M8X20	0,000		
400	---		SCREW PLUG	1			50N.M*DICHTRING M24X1,5	0,000		
---	0636.304.088		SCREW PLUG	1		Z00010112112	M24X1,5	0,000		
---	0634.801.206		SEALING RING	1			24X29	0,001		
410	0732.042.253		COMPRSPRING	1				0,000		
420	---		FLANGE BOLT	1			H=28,25-28,55(ABSTUFUNG:0,15MM)	0,000		
---	1290.306.445		FLANGE BOLT	1			A=28,55	0,000		
---	1290.306.444		FLANGE BOLT	1			A=28,40	0,000		
---	1290.306.443		FLANGE BOLT	1			A=28,25	0,000		
440	---		DETENT PLUNGER	1			240N*65N.M*90GRAD	0,000		
---	1324.207.018		DETENT PLUNGER	1			240 N	0,000		
---	0630.000.072		SHIM RING	1			16X22X1	0,010		
480	0501.218.540		BREATHER	1				0,000		
550	---		SWITCH	1			OEFF*45N.M*SCHEIBE* BAJONETT	0,000		
---	0501.219.856		SWITCH	1			OEFFNER DIN BAJONETT	0,000		
---	0730.002.063		WASHER	1			A=2,20 IN 0730 003 298(2)	5		
560	0731.208.111		GEAR SHIFT PIN	1			ENTHALT.IN 0731 208 077(2)	0,000		

Plant

Page 1 from 2

Material number: 1351.001.029
Plate: 032.93.31-1
CLUTCH RELEASE DEVICE

6 S 700 BO / COMESA-MAZ
CLUTCH RELEASE DEVICE

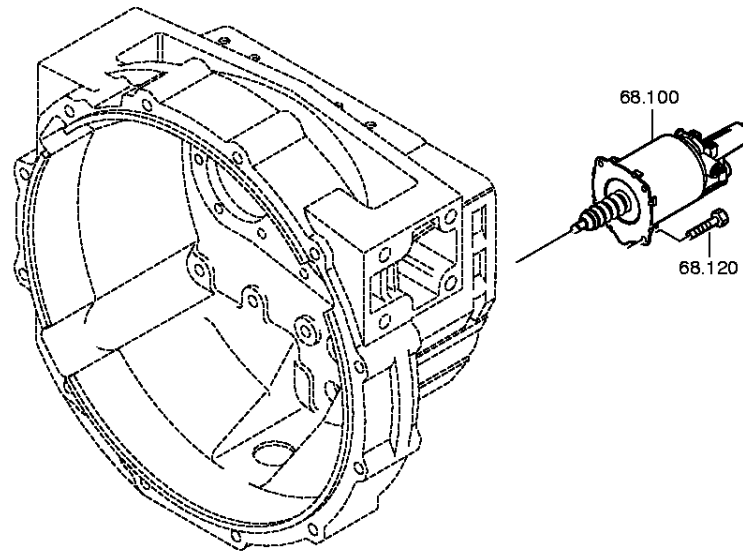


Plant

Page 2 from 2

Material number: 1351.001.029
Plate: 032.93.68-1
CLUTCH RELEASE DEVICE

6 S 700 BO / COMESA-MAZ
CLUTCH RELEASE DEVICE



Parts list

Page 1 from 1

Material number: 1351.001.029

6 S 700 BO / COMESA-MAZ

Plate: 032.93.31-1

Material-assembly-group-no: 1290.168.007



Pos.	Material number	Customer material	Name	Quantity	ME	Amend. no.	Techn. Info.	Weight	Rep kit	Alternative material
60	6060.268.003		RELEASE FORK	1			KPL.SW=75	0,000		
80	0501.307.306		BALL CUP	1				0,000		
90	6060.368.066		BALL PIN	1		Z00009173210		0,000		
94	---		HEXAGON NUT	1			M16	0,000		
---	0637.100.245		HEXAGON NUT	1		Z00007283313	M16	0,000		
---	---		SPRING WASHER	1		Z00018433411		0,000		
100	0501.007.075		CLUTCH CYLINDER	1				0,000		
120	0636.016.412		HEXAGON BOLT	4			M8X22	0,000		